



## Land of the Fanns – 100 Stories

### Story Collecting – Introduction and guidance

The Land of the Fanns Landscape Partnership Scheme aims to restore and reconnect the natural and historic landscape within the area, whilst building understanding and attachment among local people to enjoy and celebrate its special character.

The Land of the Fanns Landscape Partnership Scheme is based on the East London and west Essex border covering parts of four Local Authority areas - London Borough of Barking and Dagenham, Thurrock Council and Brentwood Council. The partnership also includes Thames Chase Trust, Forestry Commission, Essex County Council, Thames Estuary Partnership and Thames 21.

#### **Community Mapping 100 Stories Project May 2019 – June 2020.**

Kinetika is a Purfleet based arts organisation and we are working with Land of the Fanns to deliver a Community Mapping project. We are inviting local people and communities to identify and celebrate 100 Stories gathered in response to the different Landscape Character Areas within the Land of the Fanns area.

Between 26 Oct-Nov 2<sup>nd</sup> 2019 (Half-term) participants will be invited to Kinetika's studio at High House Production Park to write up the stories, create illustrations, make short audio recordings and films that will be shared on the The Land of the Fanns website.

In the Spring of 2020 participants will turn the drawings in to 100 silk flags using Kinetika's batik process. The flags and the sharing of stories will form part of the celebratory Walking Arts Festival planned for May/June 2020.

Over the summer we are collecting in stories. Click [here](#) to download a Call Out for Stories and a Story Form for you to write your story on.

#### **Themes**

These are the overarching themes of the project and we will group our top 100 stories to reflect them and the 11 Landscape Character Areas.

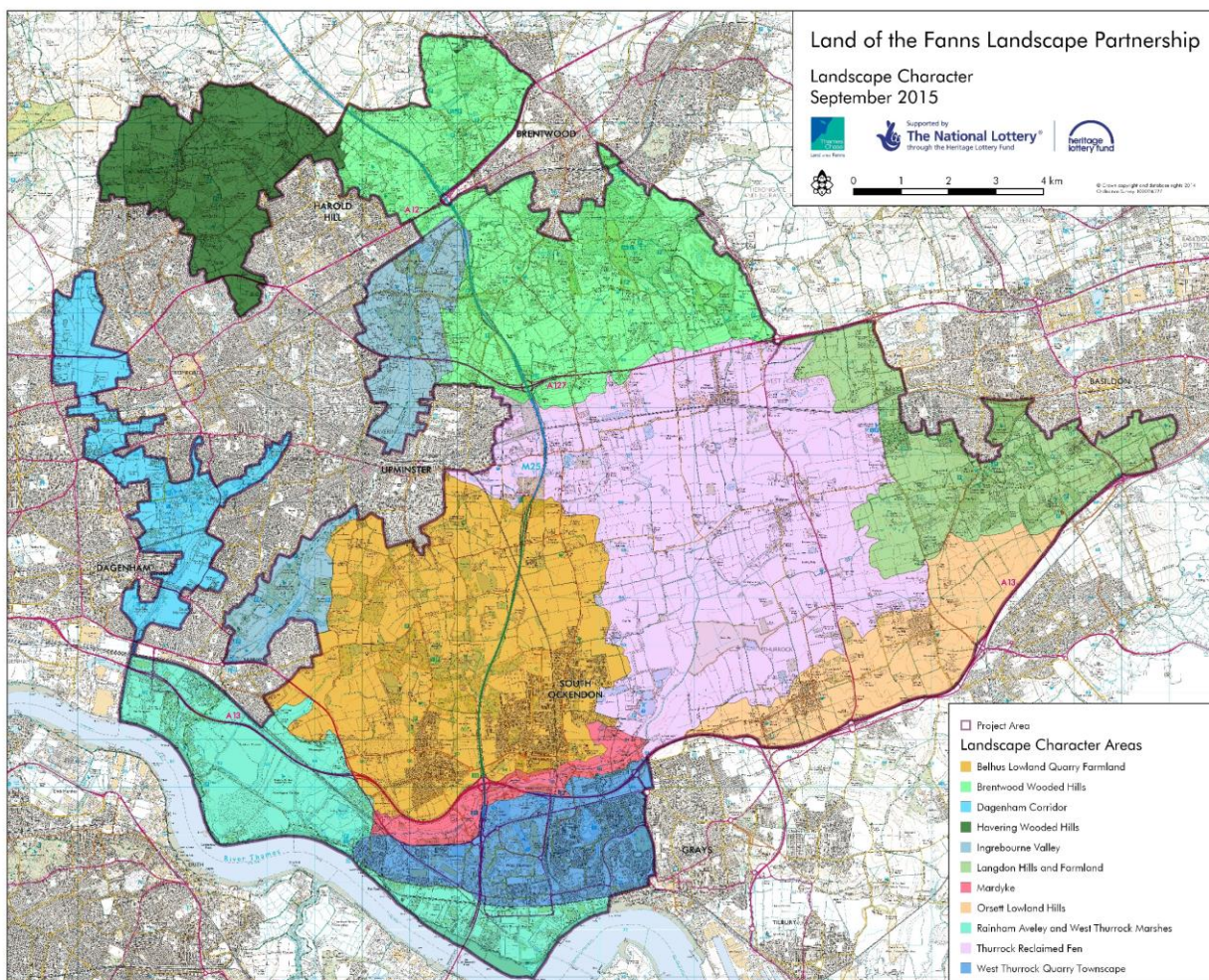
1. The Land of the Fanns is an intricate landscape, full of surprises and hidden gems that rewards exploring.
2. It is a crossroad landscape, situated along the Thames, a place where people have always travelled into, through and away from. Journeys.
3. The Land of the Fanns is about the shifting relationship between land and water.
4. Land of the Fanns is famous for trade, commerce and industry – Human intervention on the Land – People and projects.



## Landscape Character Areas

1. Havering Wooded Hills, including [Bedfords Park](#)
2. Langdon Hills and Farmland
3. Rainham, Aveley and West Thurrock Marshes, including [High House Production Park](#)
4. Mardyke, including [Davy Down](#)
5. Dagenham Corridor, including [Eastbrookend Country Park](#) and Vallance House.
6. Belhus Lowland Quarry Farmland, including [Little Belhus Country Park](#) and [Belhus Woods](#)
7. Ingrebourne Valley, including Pages Wood, [Hornchurch Country Park](#), [Langtons House](#) and [Rainham Hall](#)
8. Brentwood Wooded Hills, including [Thorndon Country Park](#), Dagenham Park
9. Orsett Lowland Hills
10. Thurrock Reclaimed Fen including Bulphan
11. West Thurrock Quarry Landscape including [Chafford Gorges](#)

## Land of the Fanns Landscape Character Area map



## Community Assets

Does your story feature a local building, piece of land or viewpoint which you consider to be of particular value to the local community?

### What is a Community Asset?

A community asset is a local building, piece of land or viewpoint which the community considers to be of particular value to the local community. Each community is free to decide for itself what it values. The community assets across the Land of the Fanns area will be mapped and could then be added to local place making frameworks (e.g. local heritage list).

More information on community assets can be found [here](#).

**Submit your stories by 8 September via email to:**

[jo@kinetika.co.uk](mailto:jo@kinetika.co.uk)

Or post them to:

Jo Beal, Kinetika, 119 Artists Studios, High House Production Park, Off Purfleet Bypass, Purfleet, Thurrock RM19 1AS



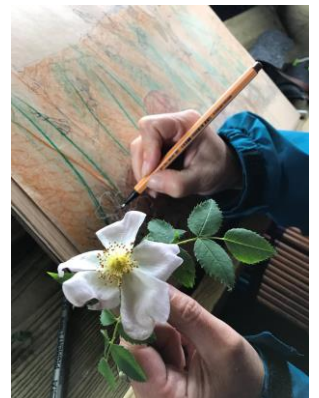
## Free Drawing Workshops

Need some more ideas?

Why not attend these free workshops in August which aim to inspire memories and stories about your connection to the Land of the Fanns landscape.

The drawing workshops are led by professional artist Jo Beal, who will provide top tips and techniques to help you reflect on and capture your experience of the locations and your personal connection to the landscape. No previous drawing experience is necessary.

Check for updates and book [here](#).



## Saturday 3<sup>rd</sup> August

### Drawing workshop – [St Mary's Church, Great Warley.](#)

10.00 a.m. – 12.30 p.m.

St Mary the Virgin Church, Great Warley, Great Warley Street, Great Warley, Brentwood, Essex, CM13 3JP

The Church is a Grade I listed Building which has a beautiful Arts and Crafts and Art Nouveau interior. It is a hidden gem and highly regarded as a local treasure.

### Drawing workshop – [Warley Place Nature Reserve](#)

1.30 – 4.30 p.m.

Warley Place Nature Reserve, Warley Road, Great Warley, Brentwood, CM13 3HU

Within short walking distance of the Church this 25-acre reserve is the site of a house and once famous Edwardian gardens belonging to Ellen Willmott. It is now maintained as a nature reserve by Essex Wildlife Trust. Please note there are no public facilities at the reserve.

## Sunday 4<sup>th</sup> August

### Drawing workshop - [Haven Plotlands Museum](#) TBC

10.00 a.m. – 12.30 p.m.

Haven Plotlands Museum, Essex Wildlife Trust, Lower Dunton Road, Basildon, Essex, SS16 6EB

Our museum is located at the Essex Wildlife Trust Langdon Nature Reserve. The Haven Plotlands Museum is a 1930s bungalow and garden that shows what life was like for resident Plotlanders before the building of Basildon New Town. The houses were originally built as holiday homes by families (mainly from London) who bought individual plots. The Haven Museum, the last remaining house, has been owned by Essex Wildlife Trust since the 1980s.

### Drawing workshop - [Havering Country Park](#)

1.30 – 4.00 p.m.

Meet in the car park, Pinewood Road, Havering-Atte-Bower. RM4 1PB.

Havering Country Park is a large country park with a good mixture of grassland and woodland. It is formerly part of the estate of Havering Palace with Charles I being the last monarch to stay there in the 17th century. Of particular note is the impressive avenue of Wellingtonia trees (Giant Redwoods), which is one of only two plantations in the country. The park provides good links from both the urban environment and Havering-Atte-Bower village into the surrounding countryside

## Friday 16<sup>th</sup> August - Tell us your stories over a cup of tea – [Bulphan Village Hall](#). No need to book, just turn up.

Church Rd, Bulphan, Upminster RM14 3RU

1.30 – 4.30 p.m.

Come to the Village Hall for a cup of tea and a chat about the local landscape and what it means to you.

2.30 – 4.00 p.m.

Take part in a walk and draw session around the village to inspire stories and memories about the local landscape.



## Saturday 17<sup>th</sup> August

### Drawing workshop - [Upminster Tithe Barn Museum](#) TBC

10.00 a.m. – 12.30 p.m.

Upminster Tithe Barn Museum, Hall Lane, Upminster RM14 1AU

The Upminster Tithe Barn houses a collection of around 14,500 artifacts of domestic and agricultural use, ranging from Roman times to the present day.

### Drawing workshop – [Grays Gorge](#)

1.30 – 4.00 p.m.

Meet in the Car Park at Drake Community Centre Drake Rd, Chafford Hundred, Grays RM16 6BZ

Grays Gorge is a large, historic chalk quarry which can be traced back to at least 1801 when a quarry there, known as Duvals Pit, was owned by a man named Zachariah Button. The quarry has produced a considerable number of fossils over the years including fossil shark teeth, sea urchins and molluscs. Around the rim of the quarry are a number of fine sarsen stones, all with unweathered mammillated surfaces. The stones, up to 2 metres (6 feet) long and around 50 million years old, were found at the base of the Thames terrace gravels overlying the Thanet Sand and were exhumed as quarrying proceeded.

For more information please contact:

Aisling Woodhead, Land of the Fanns Environment Engagement Officer

Thames Chase Trust, Pike Lane, Upminster, Essex, RM14 3NS

T: 01708 642978 E: [aisling.woodhead@thameschase.org.uk](mailto:aisling.woodhead@thameschase.org.uk)

Jo Beal, Kinetika

T: 07966 431467 E: [jo@kinetika.co.uk](mailto:jo@kinetika.co.uk)

