

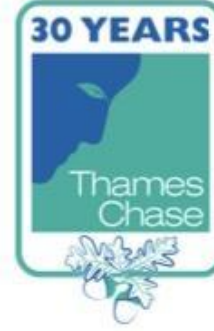


Dave Bigden

Thames Chase Community Forest Director

Community Forest Partnership Board - Chair

**Thames Chase Community Forest and the legacy of Land
of the Fanns**



The Forest Centre Pike Lane Upminster RM14 3NS

- Parking
- Visitor Centre with café
- Historic farm buildings
- Education Room
- Community Tree Nursery
- All ability surfaced trails & accessible open space (FE)

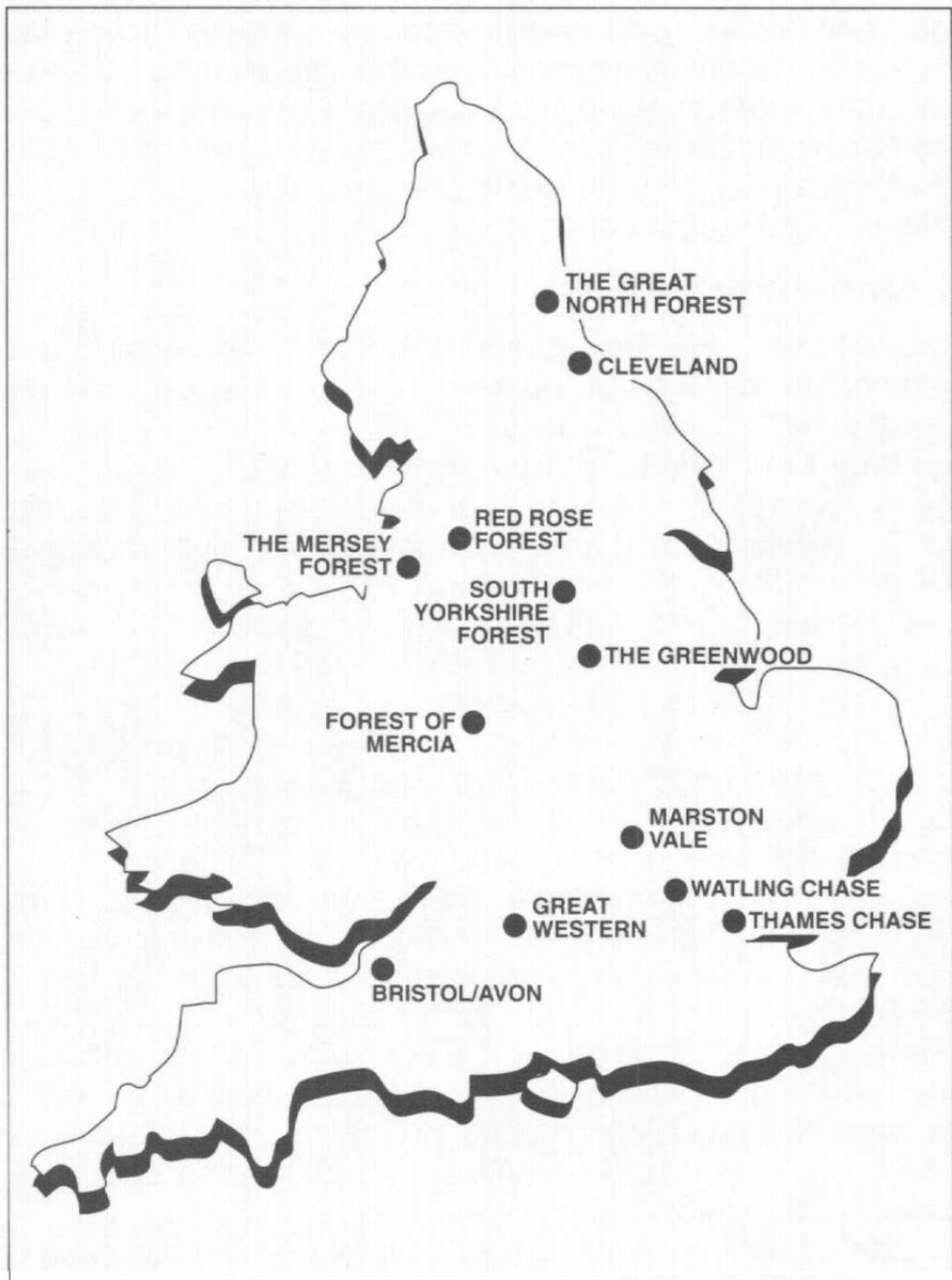


Fig. 9: Outline map of England and Wales, showing the locations of Community Forests. (Source: Countryside Commission).

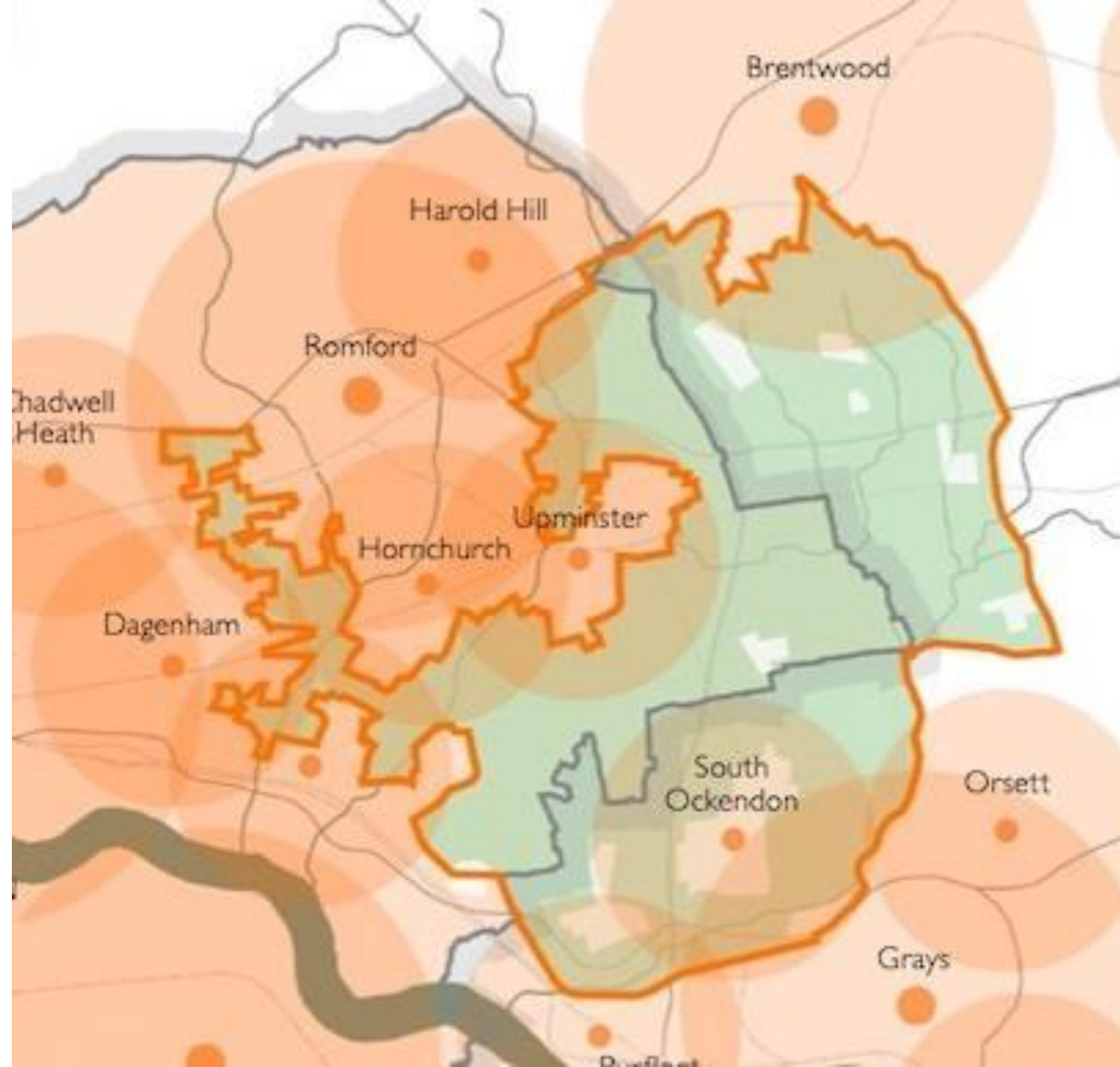


England's
Community
Forests



- **Community** Forests are located in areas of greatest need
- On the edge of towns & cities, close to people
- Community Forests have been transforming the landscapes and communities in and around our largest towns and cities for over thirty years



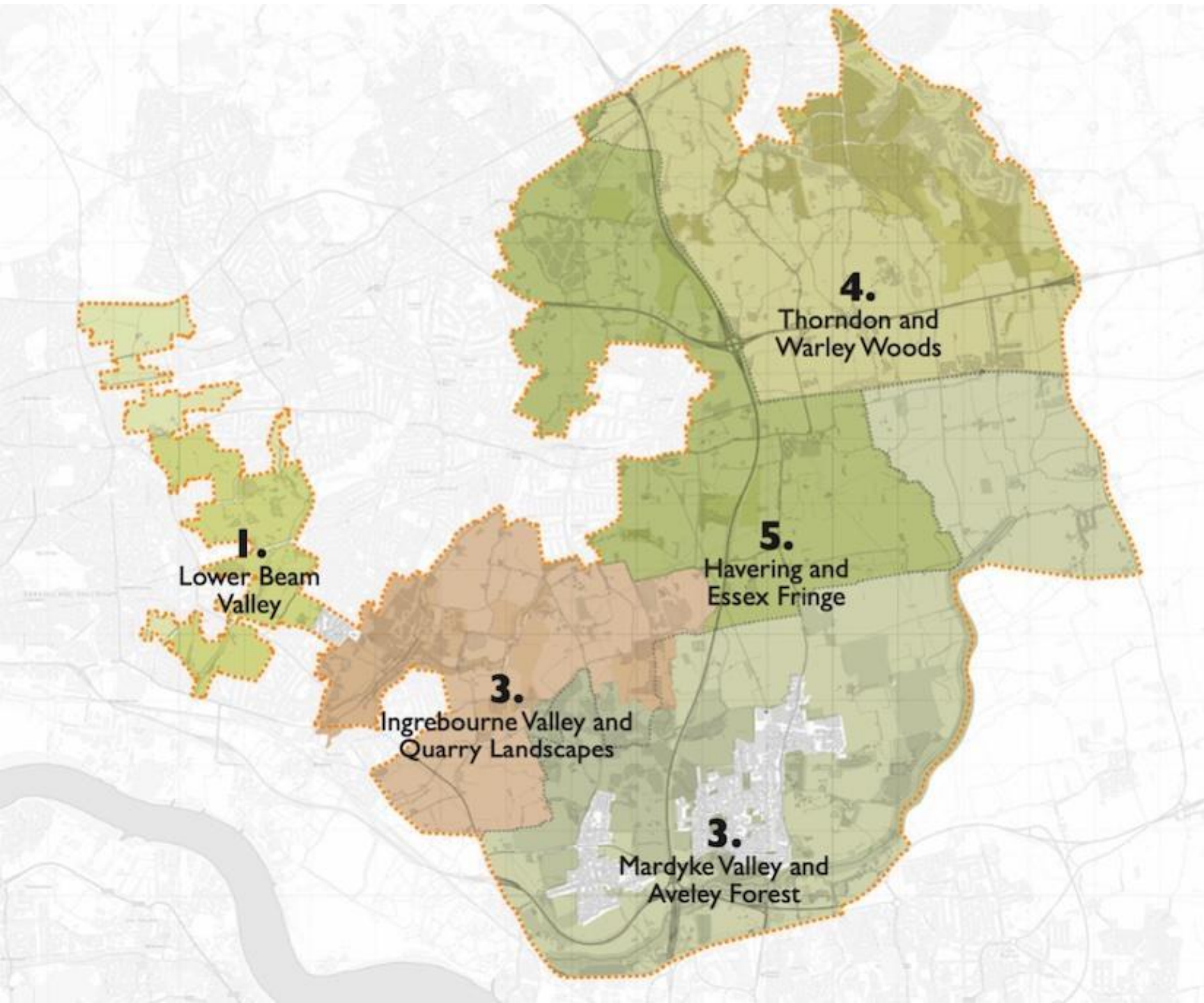




By 2030, Thames Chase Community Forest will be recognised as an inspirational example of landscape regeneration where enhanced, connected woodland and green space has made a clear difference to wildlife and peoples' lives

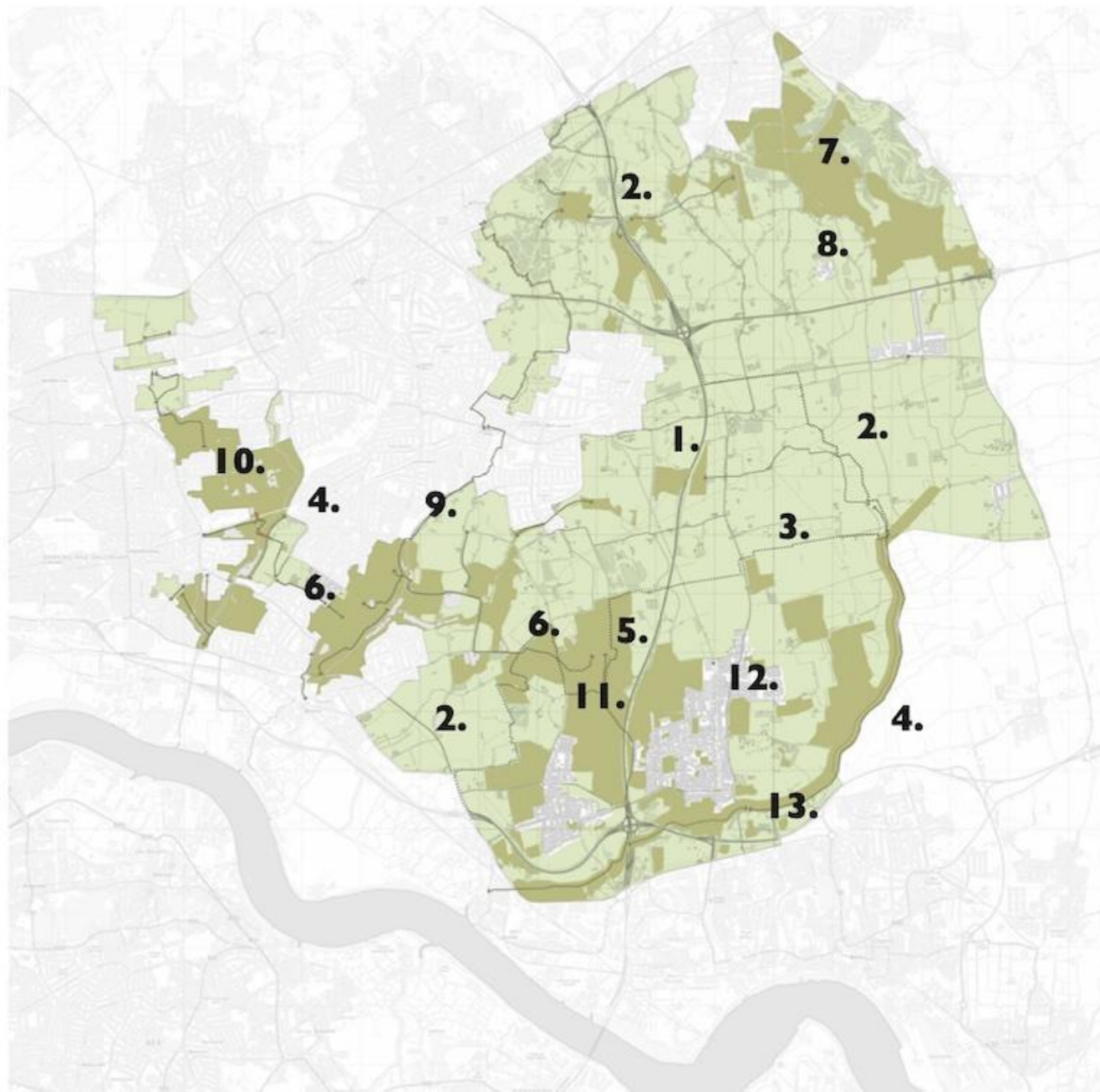
Shaped by 6 clear objectives around:

- Protecting, improving and expanding woodland character
- Sustaining the natural integrity of the Forest's air, land and water including wildlife
- Developing a connected network of links and accessible, vibrant greenspaces
- Integrating climate change adaptation and mitigation responses into the developing Forest
- Improving local health and wellbeing, volunteering, learning and employment
- Enabling effective partnership working from national to local level to maximise the impact of available resources



75 Projects

- Area 1 Lower Beam Valley
- Area 2 Ingrebourne Valley and Quarry Landscapes
- Area 3 Mardyke Valley and Aveley Forest
- Area 4 Thorndon and Warley Woods
- Area 5 Havering and Essex Fringe

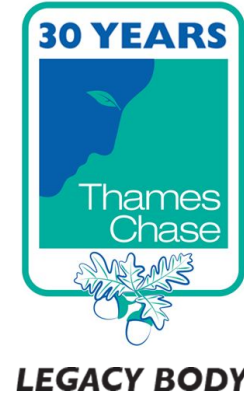


Thames Chase Community Forest

The Land of the Fanns Partnership owes its origins to Thames Chase Community Forest, one of England's first landscape scale regeneration initiatives.

3. Land of the Fanns Landscape Partnership

Promote the cultural heritage of the area, making connections between Thames Chase people and places through time. Use creative engagement and educational projects alongside capital projects to create a compelling new narrative for the contemporary creation of the Community Forest landscape



LCAP identifies 3 legacy outcomes:

- Landscape-scale partnership working becomes established as the norm
- Greater ability and willingness to positively influence strategic decision-making
- Pride in the landscape is continually evident

To sustain this legacy, an organisation is needed to act as the 'ring-holder' or conscience for the landscape. Given how Land of the Fanns owes its origins to Thames Chase Community Forest, the Thames Chase Trust has been confirmed as the legacy vehicle for the Scheme.

TCT Board of Trustees



A new Programmes Team has been created, led by and including Land of the Fanns Officers

1.3 million trees

planted since 1990

12,050

volunteer days since 2005

70% increase

in woodlands through new planting since 1990

41.2 km of hedgerows

created or restored since 1990

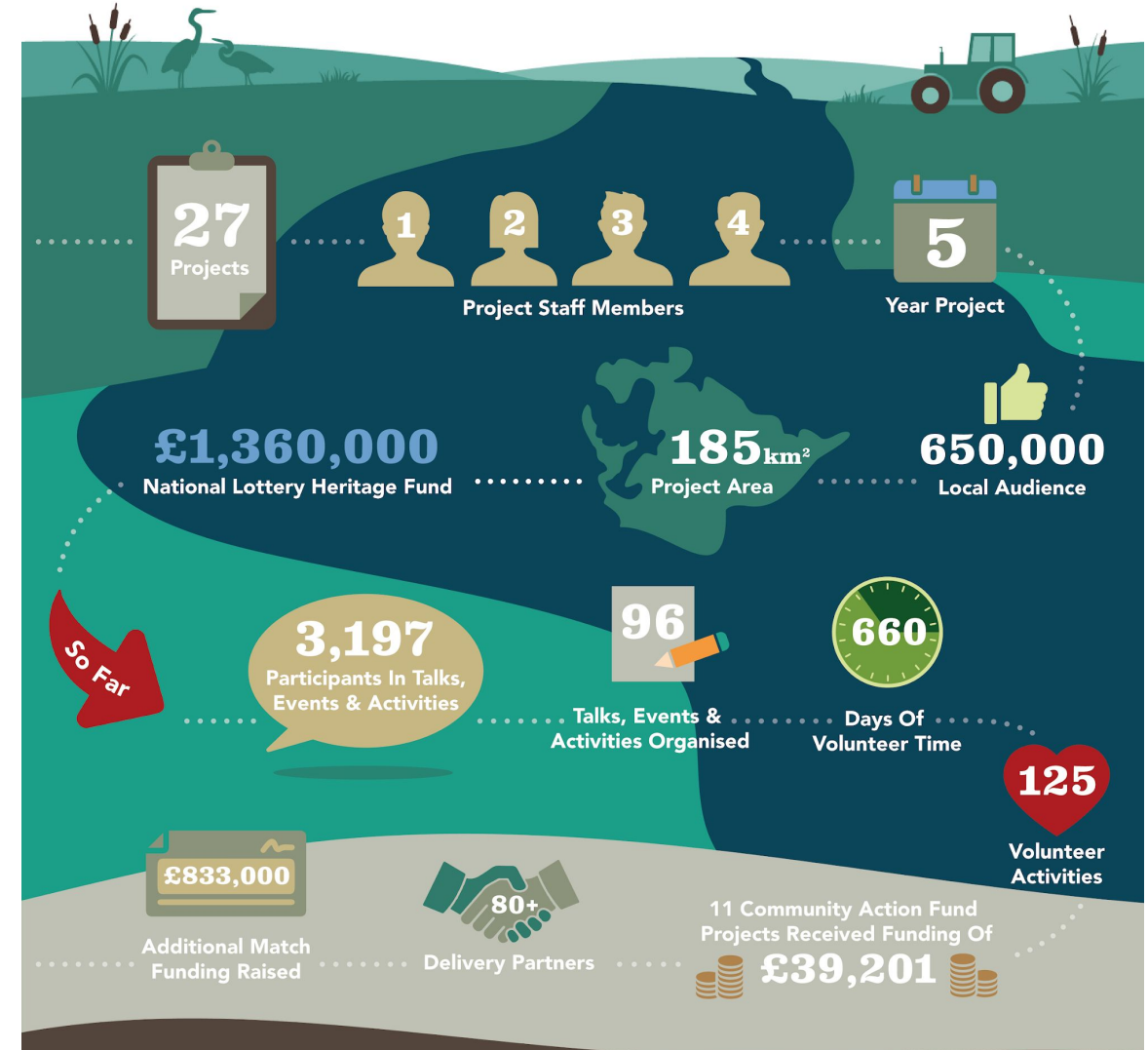
803 hectares

of non-woodland habitat created or restored since 1990



Land of the Fanns

Landscape Partnership Scheme / Years 1-3 (2017-19)



For more information visit - www.landofthefanns.org

[@LandOfTheFanns](#) [@landofthefanns](#) [@LandofTheFanns](#)

The Land of the Fanns Landscape Partnership Scheme is about bringing people together with a commitment to work towards a shared goal of discovering, restoring and enjoying what's special about the local landscape. The Land of the Fanns is a unique landscape. At its heart is Thames Chase Community Forest. The projects that make up the Land of the Fanns Scheme concentrate on the natural, archaeological and built heritage of the area.



A project portfolio that engages more than 100 partners

Essex County Council
LB Havering
LB Barking & Dagenham
Forestry England
Forestry Commission
Natural England
DEFRA
Environment Agency
TCV
Green Arc
Essex Wildlife Trust
London Wildlife Trust
RSPB
The Land Trust
Rural Arisings
Grangewaters
Stubbers
Forest of Avon
Plymouth CF
Community Forest Trust
Roding Valley Trust
Historic England

Thurrock Council
Thames21
MOLA
National Highways
Thames Water
The National Trust
Schools
Sport Essex/England
CPRE
GiGL
Parks for London
Colleges
Universities
Essex Bridleways
GLA
The Woodland Trust
MIND
Capital Growth
Sustain
The Orchard Project
The Tree Council
Brentwood BC

BT
MACE
Willmott Dixon
Groundwork
Basildon Council
IVL
Tesco
Cheviot Trees
Friends of groups
Trailnet
Conservators of SC
City of London
Anglian Water
E&S Water
LB Redbridge
The Deer Initiative
FWAG
NLHF
TCPA
Transport for London
English Heritage
LTOA

Buglife
Landowners/Farmers
The Royal Parks
Sustrans
FORD
NELFT
The Ramblers
IKEA
The Mersey Forest
Forest of MV
City of Trees
White Rose Forest
HEYwoods
Greenwood CF
Forest of Mercia
Great Western CF
Epping FDC
Havering WP
Country Parks
TDAG
Barcham Trees
Forest Research



Aerial view of North Stifford and the Mardyke Valley

- Community Forests' work at landscape-scale
- Thames Chase seeks to protect, improve and expand the woodland character of the Community Forest
- Thames Chase seeks to sustain the natural integrity of the Community Forest's air, land and water including wildlife



Trees for Climate

- Launched in November 2020
- Part of the national Government-led Nature for Climate Fund
- Directly linked to DEFRA's 25-Year Environment Plan
- Being delivered by England's Community Forests
- With partners, Thames Chase has planted almost 30,000 new trees on sites within the Forest, including local schools and public open spaces
- Thames Chase is now entering Year 3 of the scheme

Public access and value

Community Forests exist where the need is greatest; more trees and accessible woodlands contribute to healthier, more liveable and more economically rewarding places.

20%

of people in top 10% of the most deprived areas in the country are within 4km of a year one Trees for Climate site.



40,342 more people across the country are now within 500m of a woodland thanks to year one Trees for Climate delivery

Education

5% of the overall year one projects were with schools, allowing opportunities to support wider working with educational partners through projects such as Forest School and Woodland Outreach which help to connect children to nature.



Education, employment and skills

Employment and skills

In year one, a range of roles were supported through the Trees for Climate programme, including land agents and woodland contractors, and those employed in the tree supply chain.

At City of Trees, 14 'Walking with the Wounded' members were employed during the planting season as woodland contractors as well as one Kickstart young person.



Engagement, health and wellbeing

In year one over 2,163 members of the community were engaged in tree planting. The community engagement aspects were significantly affected by Covid and both the national and local lockdowns.

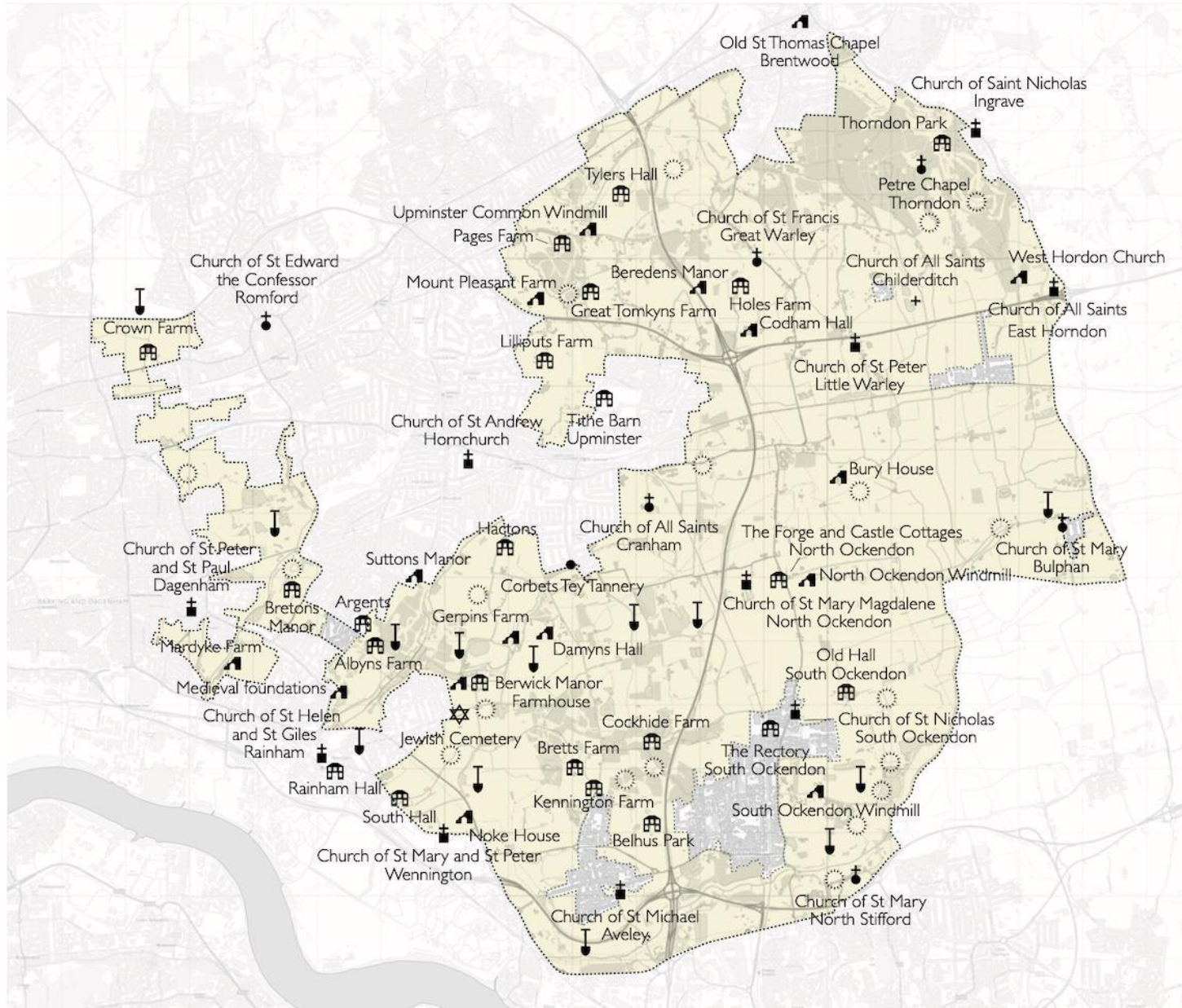


Thames Chase seeks to use the Community Forest to improve local health and wellbeing, volunteering, learning and employment



Thames Chase seeks to develop a partnership approach to volunteering, education and skills development opportunities to support Community Forest delivery and to change lives

Thames Chase - selected heritage sites



- As a landscape-scale intervention, Thames Chase can contribute towards increasing local pride and the sense of being part of something special, in turn improving community cohesion
- Tapping into its rich heritage represents the most effective way of creating a cohesive, unified narrative of the local area
- This combines modern day landscape regeneration with the past to generate a sense of shared identity amongst all local communities



- Thames Chase seeks to improve and expand the woodland character of the Community Forest
- To integrate climate change adaptation and mitigation responses into the developing Community Forest
- To use the Community Forest to improve local health and wellbeing, volunteering, learning and employment

Eastbrookend Country Park

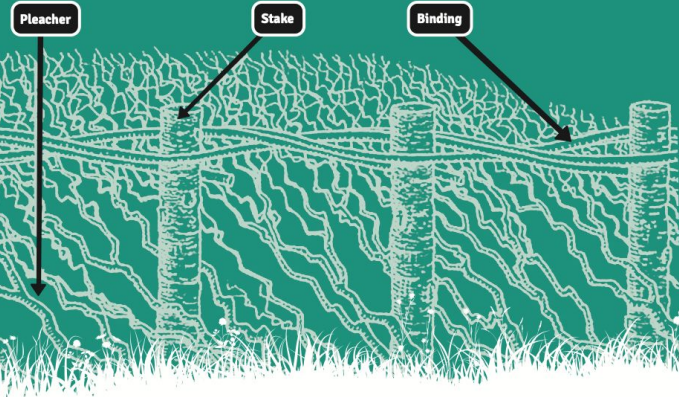
Hedgerows

An important habitat for a wide variety of animals and plants

Hedgerows support a range of plants and animals and provide important habitat connectivity. In the past, they were considered essential for marking ownership boundaries, and for keeping livestock in or out of fields by providing stock-proof barriers. They were a source of firewood and provided shelter from the elements for crops, farm animals and people.



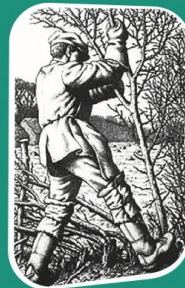
Peacock butterfly



The hedgerow you see in front of you has been improved with funding from the Mayor of London's Greener City Fund and the London Borough of Barking and Dagenham. The work has been completed by the Thames Chase Conservation Volunteers (www.thameschase.org.uk).

Hedges with trees and taller shrubs provide song posts and dense cover for nesting birds, while old trees provide holes for bats and birds as well as deadwood habitats for invertebrates. Hedges provide many species, particularly small mammals, with cover to safely move around an area.

Periodical traditional 'laying' rejuvenates hedgerows and trimming every second or third year encourages thick growth. Every 15 years or so the hedge is allowed to grow tall and then be re-laid. Cutting tends to take place in February so that the fruits and seeds are retained for winter birds and work is completed before the beginning of March when birds start nesting.



Laying



Yellowhammer



Hedgehog

Today, hedgerows are increasingly valued for the role they play in preventing soil loss and reducing pollution, and for their potential to regulate water supply and to reduce flooding. Hedgerows contribute to climate regulation, sustainable urban drainage, and reducing airborne particulates and atmospheric pollution.

Think of all these benefits as you enjoy the hedgerow in front of you!

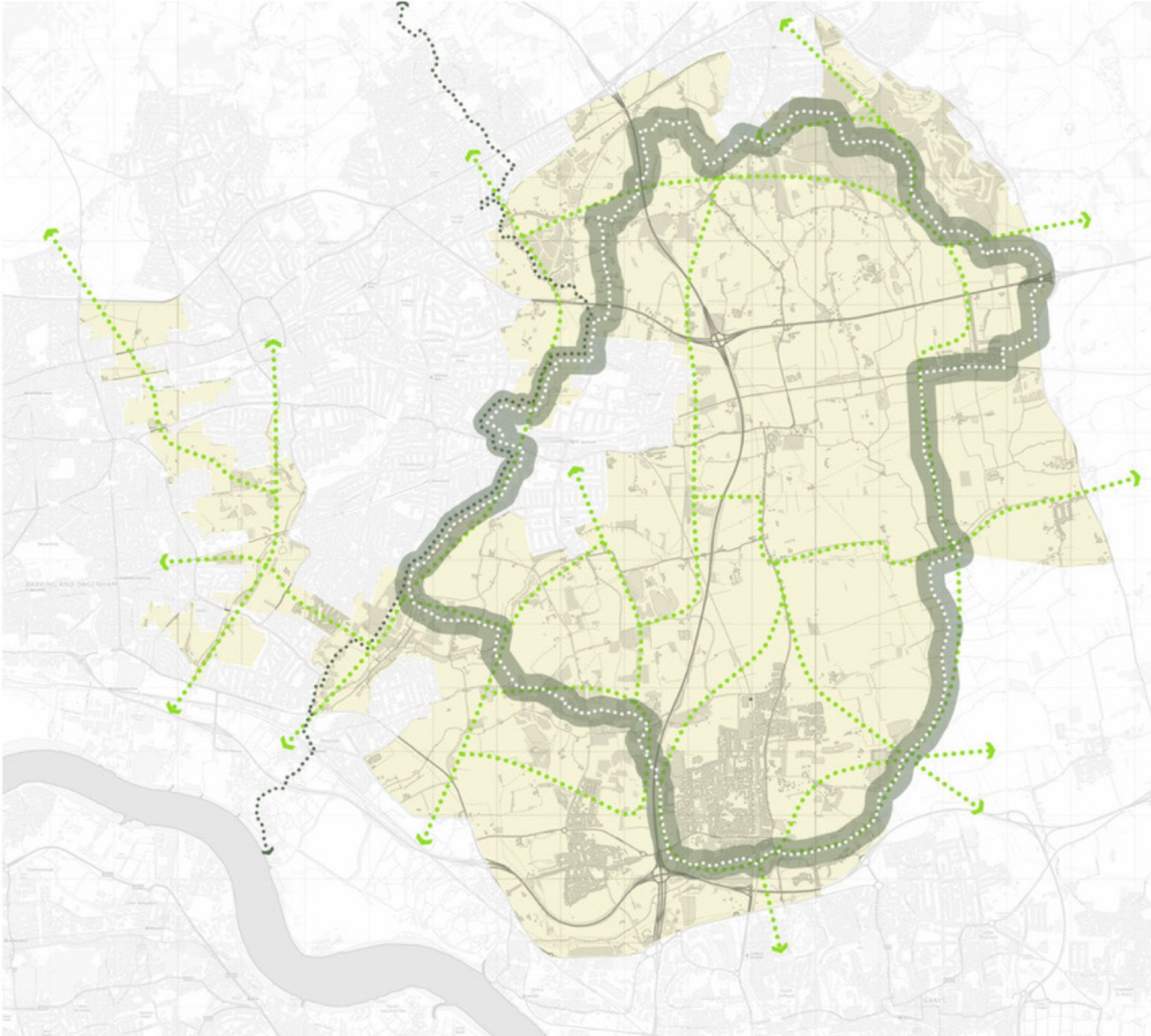


SUPPORTED BY
MAYOR OF LONDON

**Barking &
Dagenham**

- Thames Chase interprets and promotes project activity across our landscape
- Interpretation in the field, links to the Forest Centre in its role as the Information Hub for the wider landscape
- This aligns with the aims and objectives of the Land of the Fanns Interpretation Project

The Forest Circle



- Thames Chase seeks to develop a connected network of links and accessible, vibrant greenspaces throughout the Community Forest
- To use the Community Forest to improve local health and wellbeing and volunteering

GBI Benefits

SOCIAL

Promote Liveable & Healthy Places
Celebrate a Sense of Place
Improve Connectivity

- Prioritise Areas of Deprivation
- Celebrate Heritage
- Recreational Loops

ENVIRONMENTAL

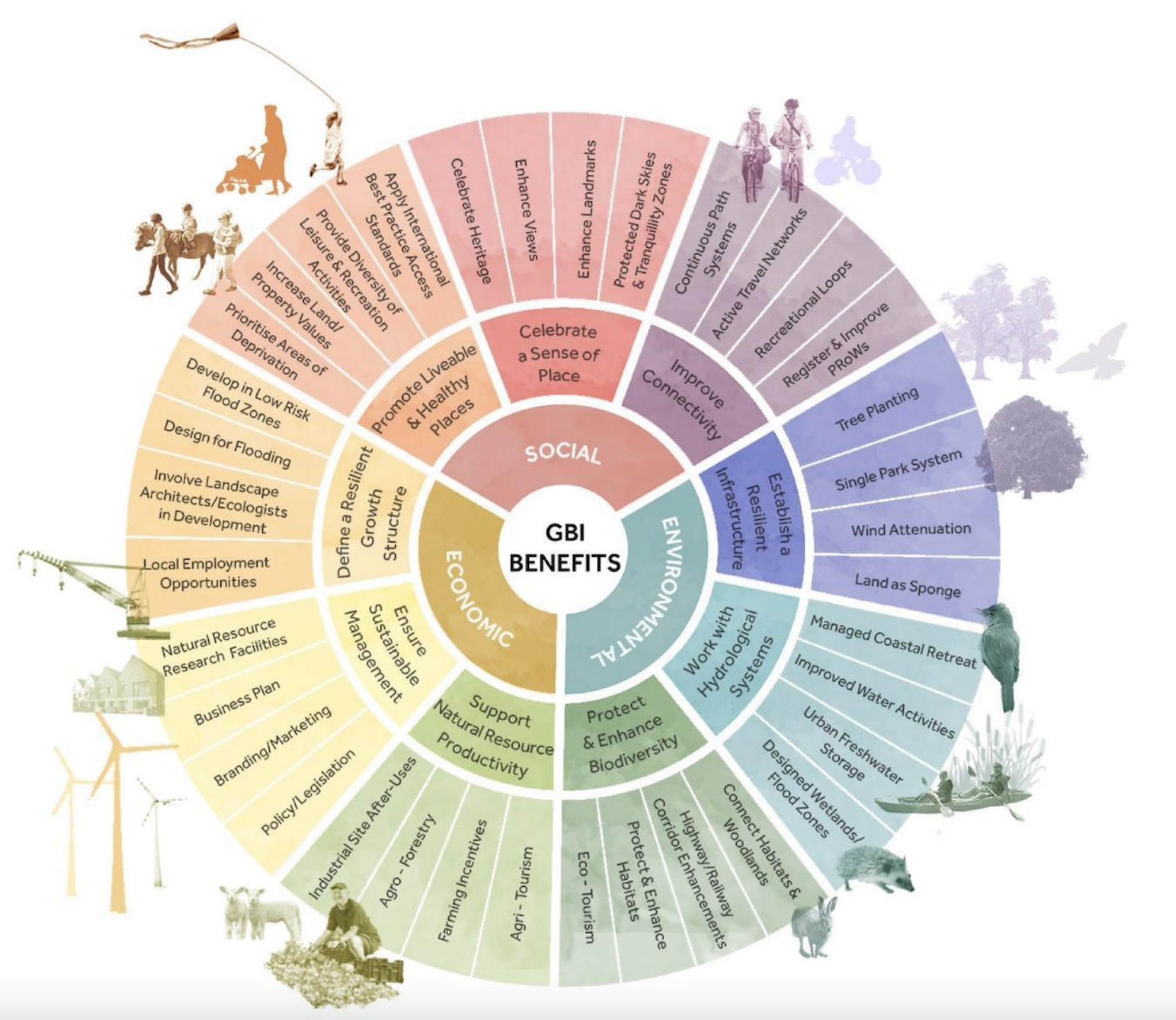
Establish a Resilient Infrastructure
Work with Hydrological Systems
Protect & Enhance Biodiversity

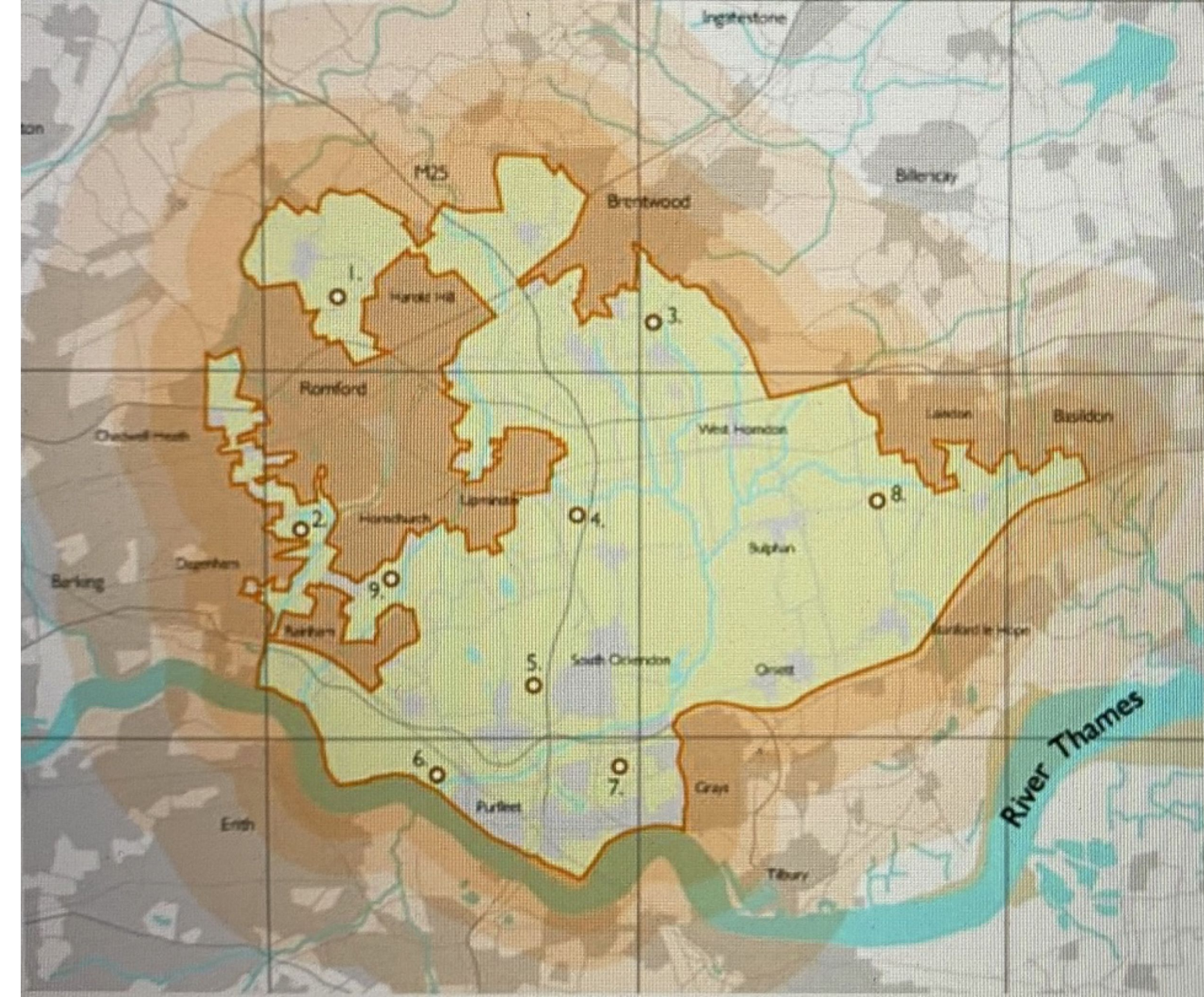
- Tree Planting
- Designed Wetlands/Flood Zones
- Protect & Enhance Habitats

ECONOMIC

Support Natural Resource Productivity
Ensure Sustainable Management
Define a Resilient Growth Structure

- Industrial Site After-Uses
- Policy/Legislation
- Local Employment Opportunities





The overriding thinking of the Partnership when defining this boundary was to bring the 650,000 people living around this area into direct contact with the newly defined landscape.

This diagram maps the major initiatives:

- Thames Chase Community Forest;
- The Green Arc;
- South Essex Green Grid;
- Kent Thameside Green Grid;
- East London Green Grid;
- North Kent Regional Park;
- Thames Gateway;
- Thames Path City to Sea; and
- England Coast Path.

Refer to *South Essex Green and Blue Infrastructure Study Baseline Report* 10.12.2019 for further details.

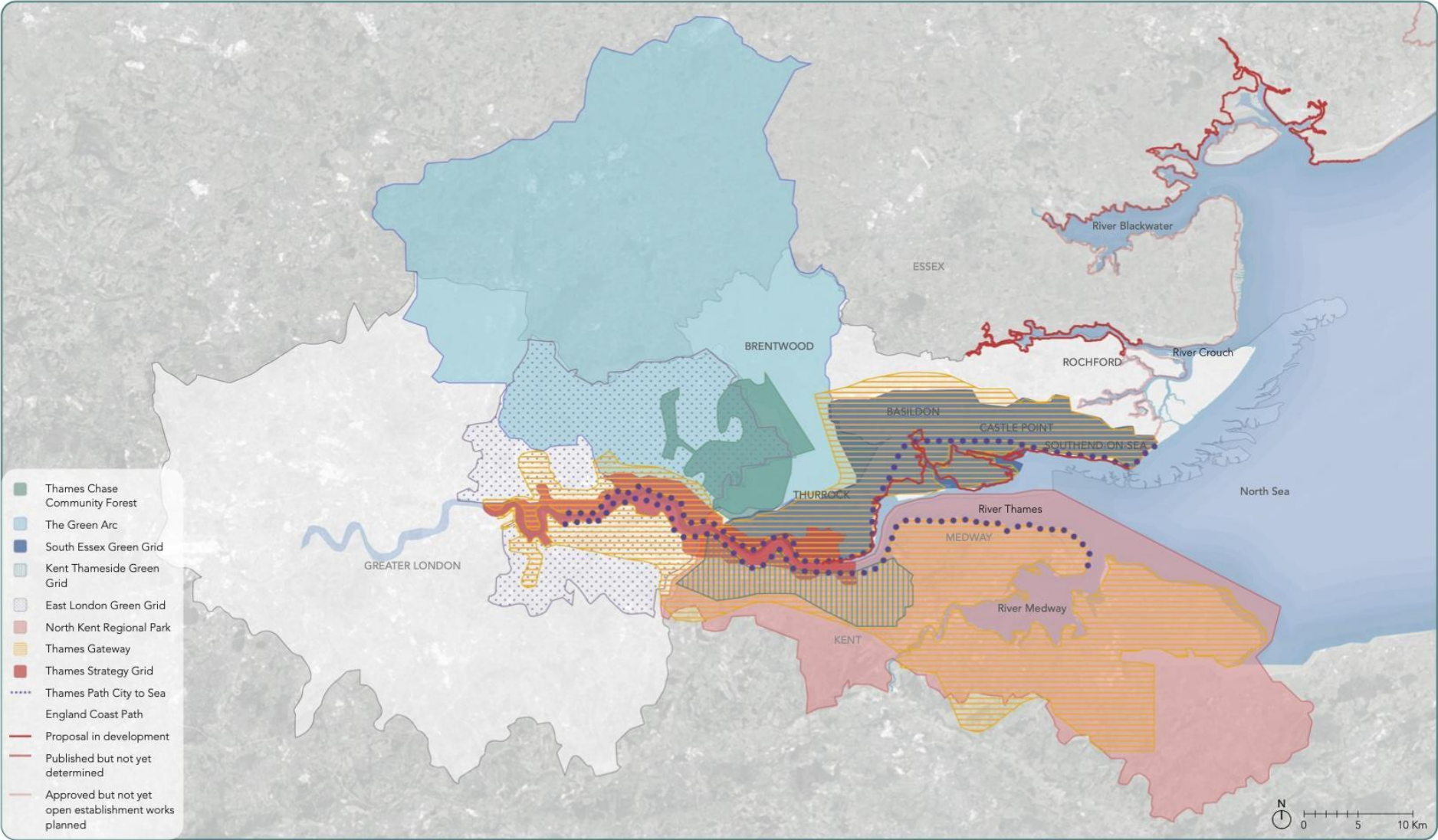


FIG.9 Other Relevant Green Initiatives

We will proactively reimagine a better future for South Essex, by creating a rich tapestry of world-class productive, connected and dynamic landscapes, woven together to form the celebrated SEE Park

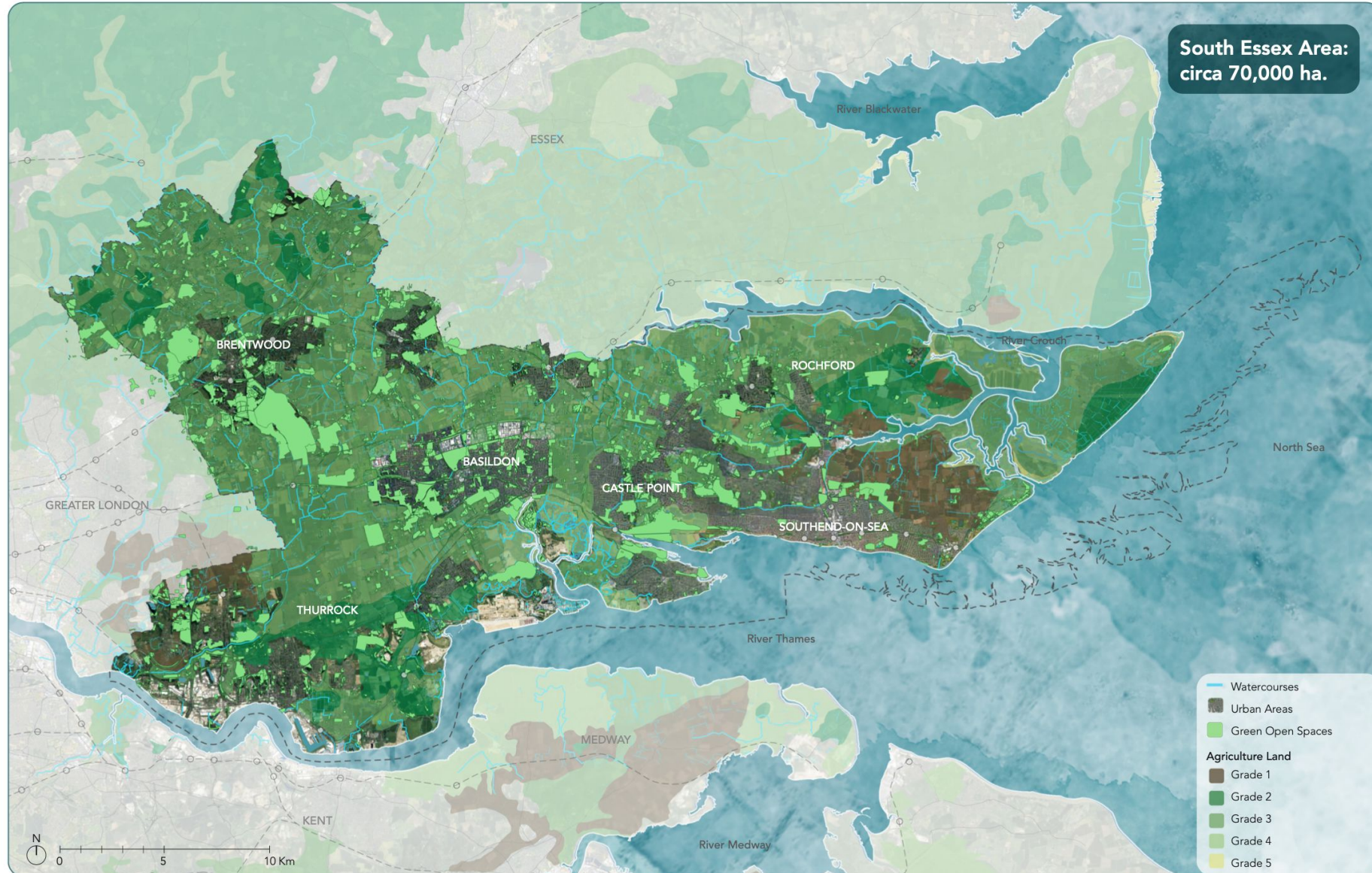


FIG.10 Green South Essex - rich with parks, natural open spaces and abundant agricultural land



- **Restoring and reconnecting**
 - Community Tree Nursery
 - River Catchments
 - Connecting Historic Landscapes
 - Environment Skills & Training
- **Understanding**
 - Designed Landscapes
 - Community Archaeology
 - Travelling Archaeological Exhibition
 - Interpreting the landscape
 - Heritage Skills & Training

- **Attachment**
 - Promoting the landscape
 - School Programme
 - Volunteer Coordination
 - Community Action Fund
- **Enjoying**
 - Walking the landscape
 - Conferences
 - Festivals & Celebrations

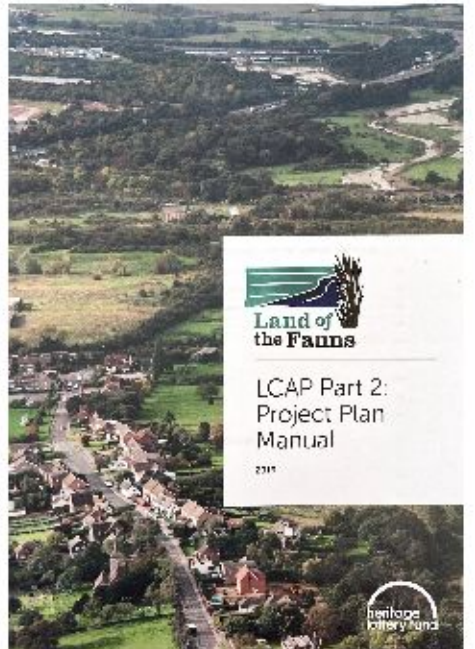
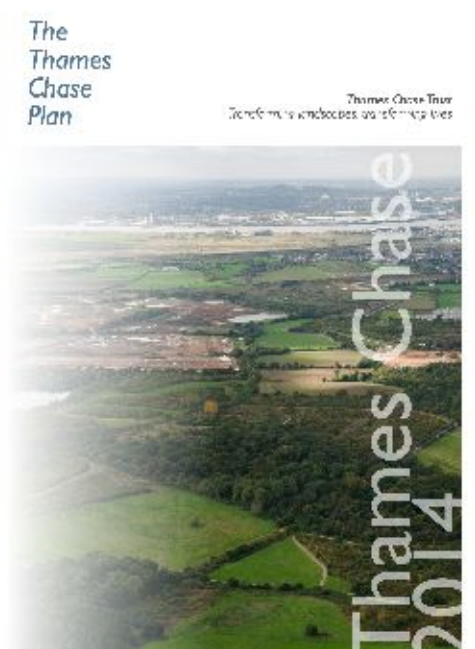
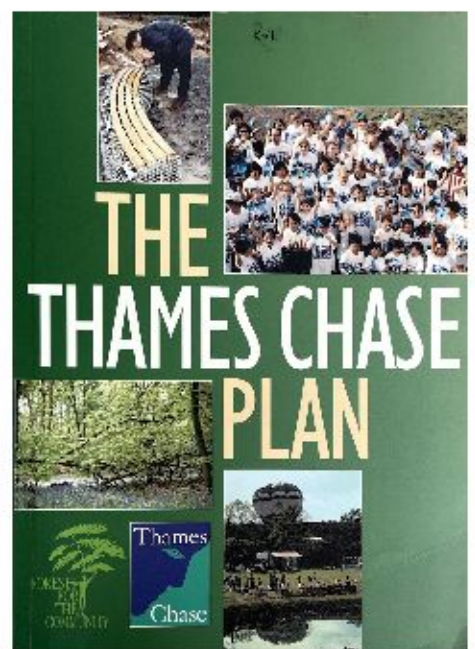
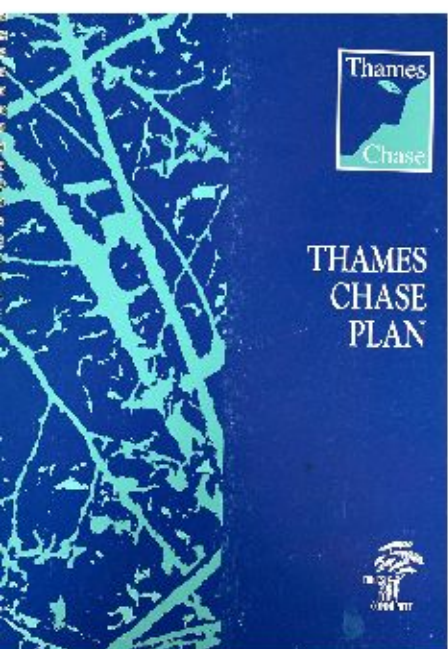
A legacy for future generations

Legacy Planning

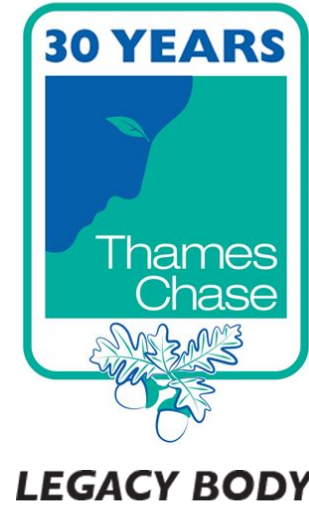
- Thames Chase Trust is the legacy vehicle for the scheme. This means that the legacy strategy can be tied to the next Thames Chase Plan.
- According to paragraph 92 of the National Planning Policy Framework (NPPF), such Plans enjoy a degree of formal recognition within the planning system:

“An approved Community Forest Plan may be a material consideration in preparing development plans and in deciding planning applications”

- This will help to reinforce the Scheme’s legacy in shaping strategic decision-making within this landscape.



2024?



Let's put the Forest to work!

Thank you