



Historic England

# **Reflections on the Historic Environment in the Land of the Fanns**

--

## **Celebrating the Land of the Fanns**

Langtons Hall, Hornchurch

Wednesday 27<sup>th</sup> April 2022

--

**Christopher Laine** MA CMLI

Landscape Architect

Development Advice Team – Regions Group

London and South East Region & East of England Region

T. 0207 973 3473 | E. [christopher.laine@historicengland.org.uk](mailto:christopher.laine@historicengland.org.uk)

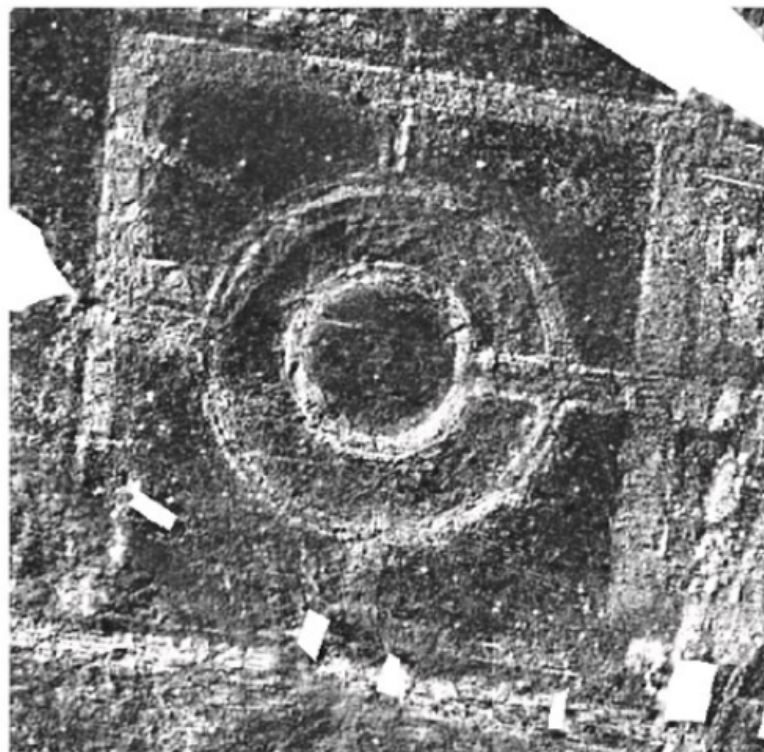




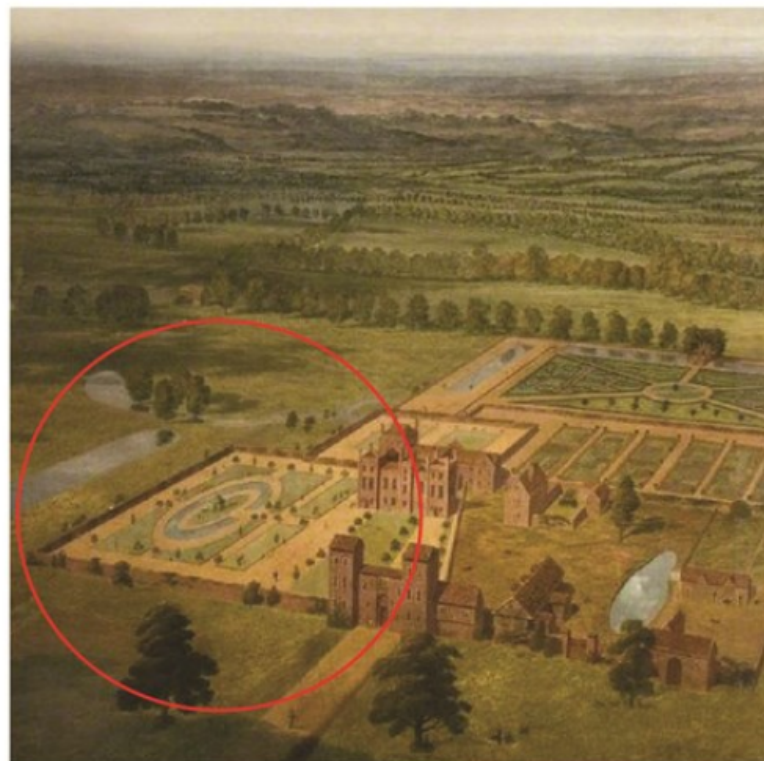
Historic England







0 60m



Extract of the Ground Penetrating Radar survey (left) showing the survival of historic garden features compared to a painting (right) showing the gardens c1710 © (Left) Historic England (Right) Thurrock Museum



Historic England







Historic England



Dagnam Park, Havering. Land of the Fanns / Essex Gardens Trust volunteers surveying the kitchen garden dipping pond

© Twigs Way





Warley Place, Warley Road, Great Warley, Brentwood, Essex. Volunteers clearing the south pond © Historic England DP300906





Thorndon Hall, Brentwood, Essex. Aerial photograph from May 2016 © Historic England **29863\_013**





Thorndon Hall, Brentwood, Essex. Thorndon Old Hall scheduled monument in 2018 © Historic England



Figure 17: Vertical photographs which show the sequence of changes to Belhus Park between 1951 and 2005.  
A: RAF/58/715 VP3 5016 04-JUN-1951 Historic England Archive RAF photography. B: RAF/582/1230 F22 44 06-JUL-1955 Historic England Archive RAF photography. C: RAF/58/4646 F44 299 28-AUG-1961 Historic England Archive RAF photography. D: MAL/70085 V 205 13-NOV-1970 Historic England Archive. E: MAL/81004 V 105 28-MAR-1981 © Essex County Council. F: EARTH.GOOGLE.COM 12-2005 ACCESSED 16-DEC-2021 (Image © 2021 Getmapping PLC)





Warley Place, Warley Road, Great Warley, Brentwood, Essex. Volunteer repairing structures © Historic England DP300909



Historic England

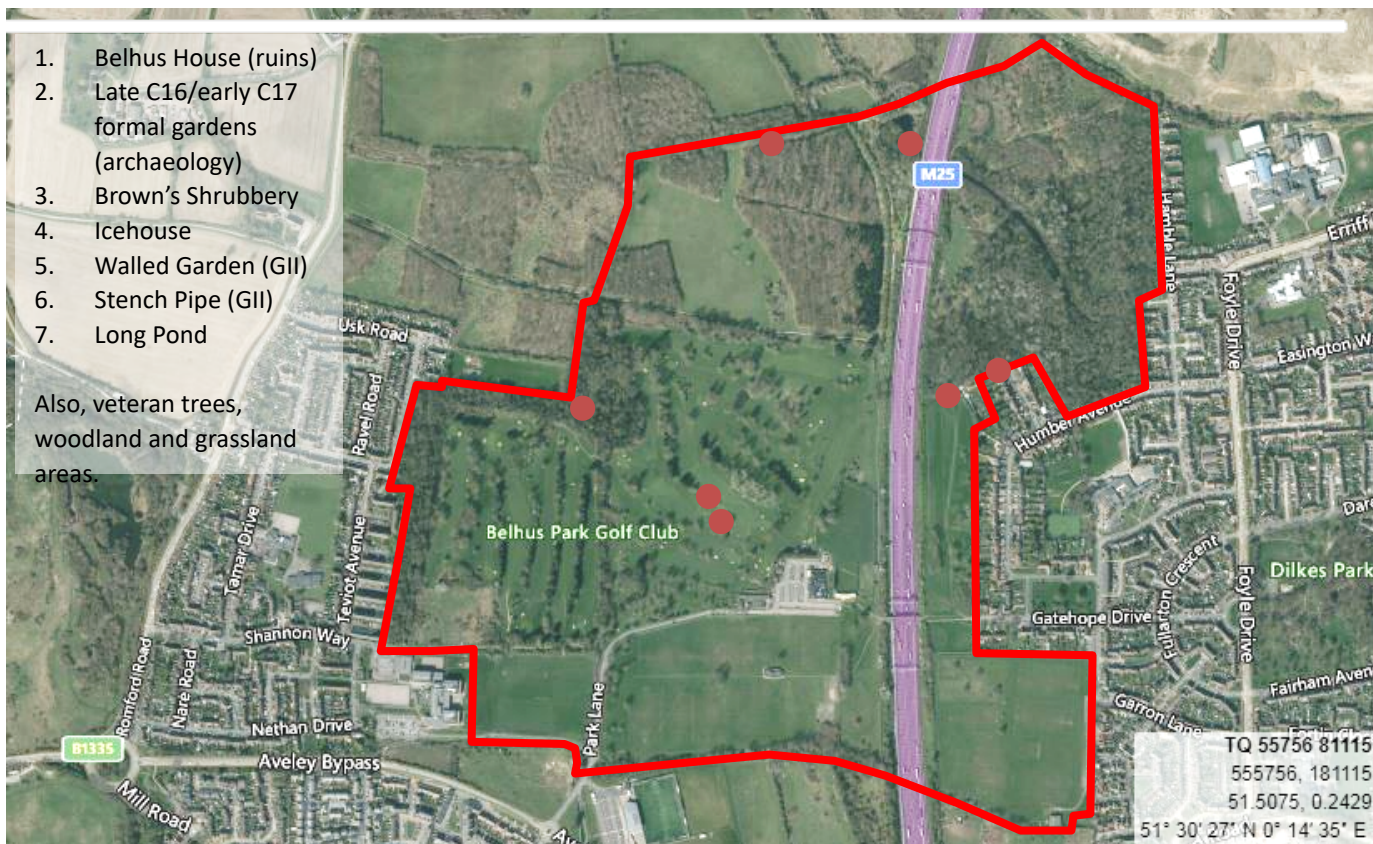


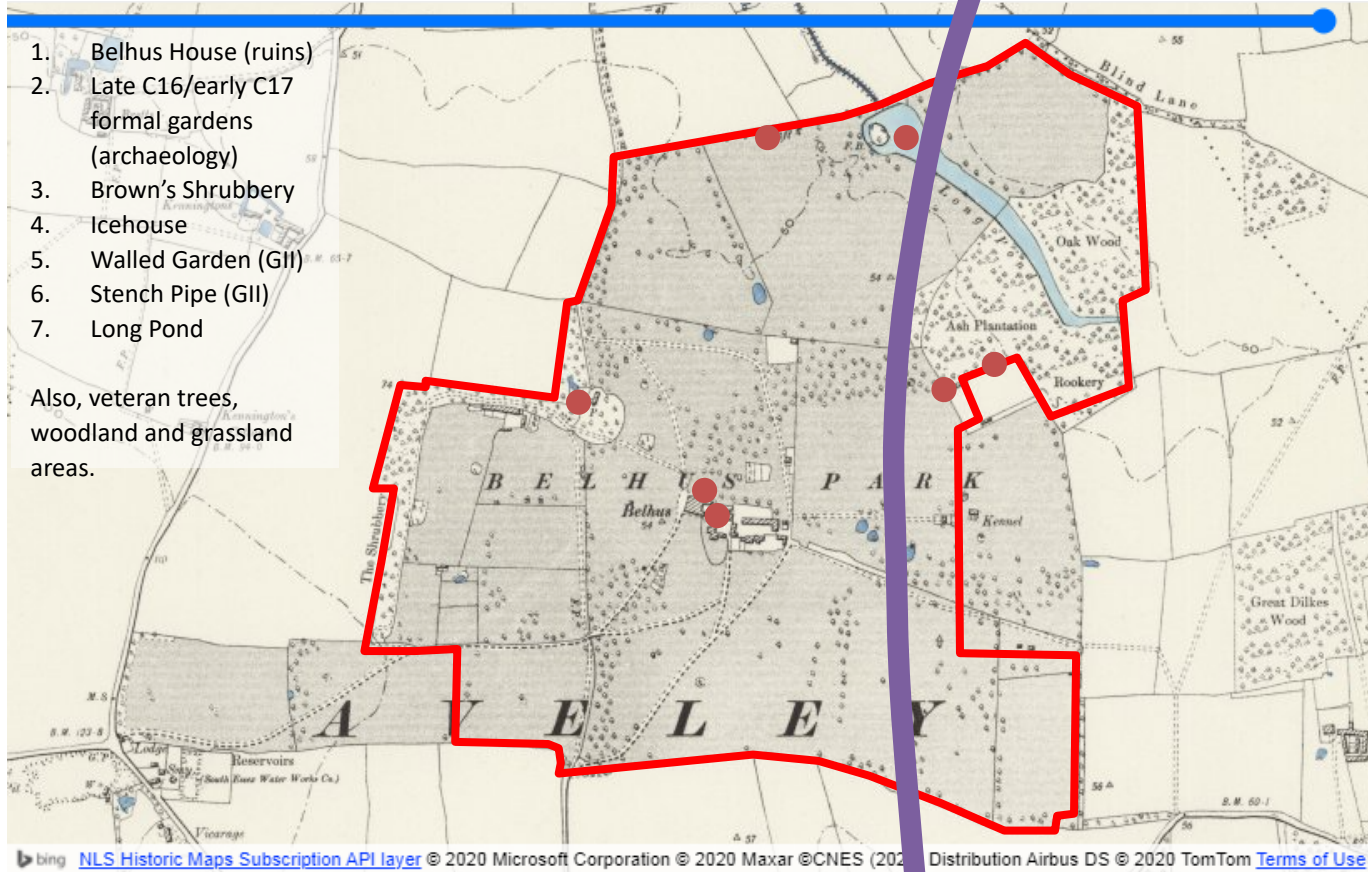


# Belhus Park, South Ockendon, Essex

- 
1. Belhus House (ruins)
  2. Late C16/early C17 formal gardens (archaeology)
  3. Brown's Shrubbery
  4. Icehouse
  5. Walled Garden (GII)
  6. Stench Pipe (GII)
  7. Long Pond

Also, veteran trees,  
woodland and grassland  
areas.



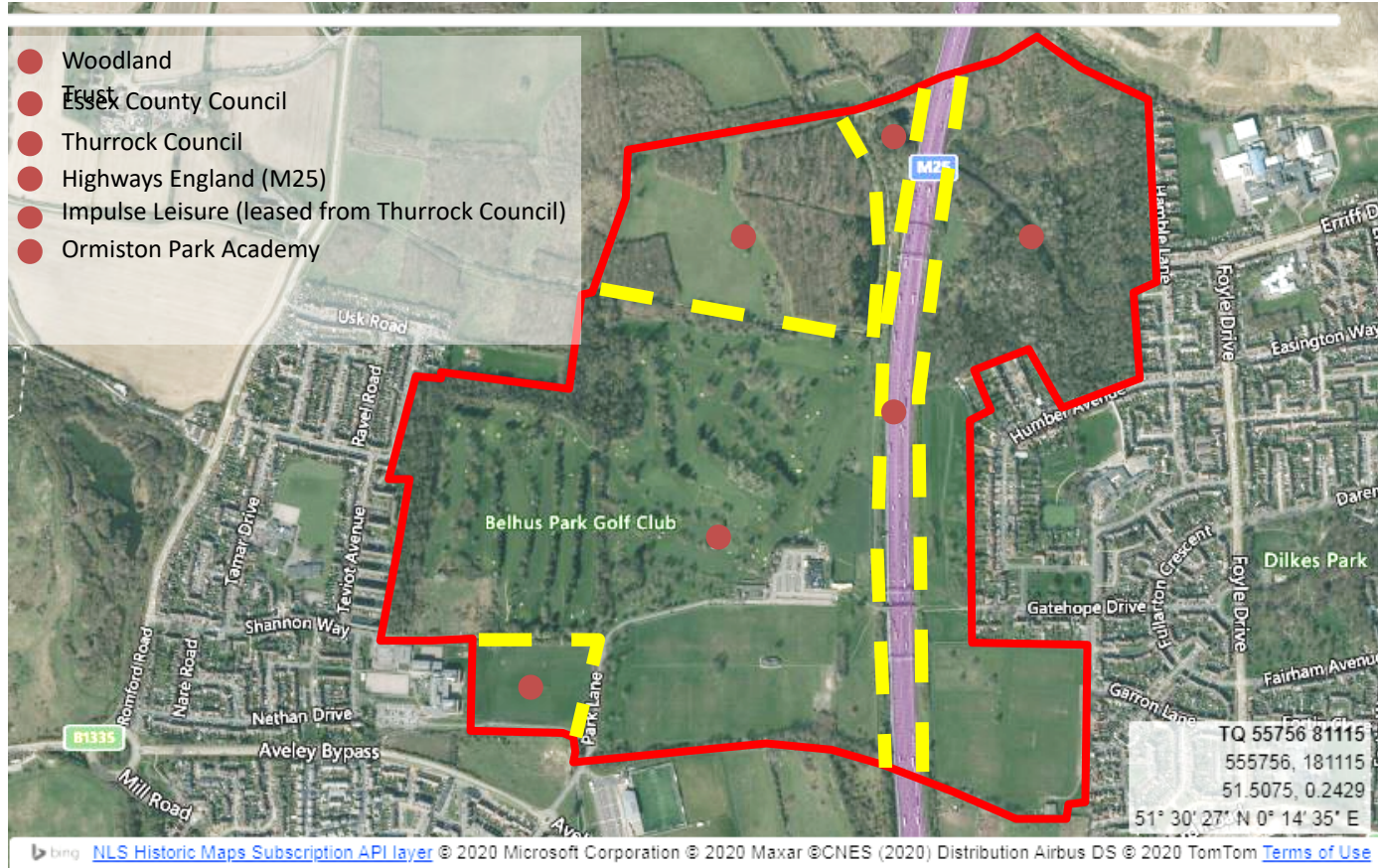




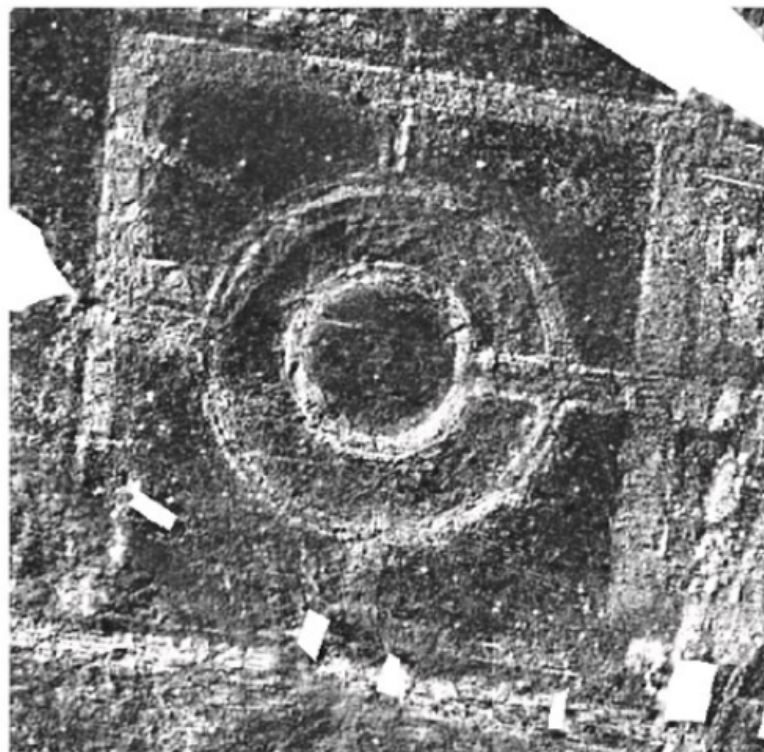


1. Belhus House (ruins)
2. Late C16/early C17 formal gardens (archaeology)
3. Brown's Shrubbery
4. Icehouse
5. Walled Garden (GII)
6. Stench Pipe (GII)
7. Long Pond

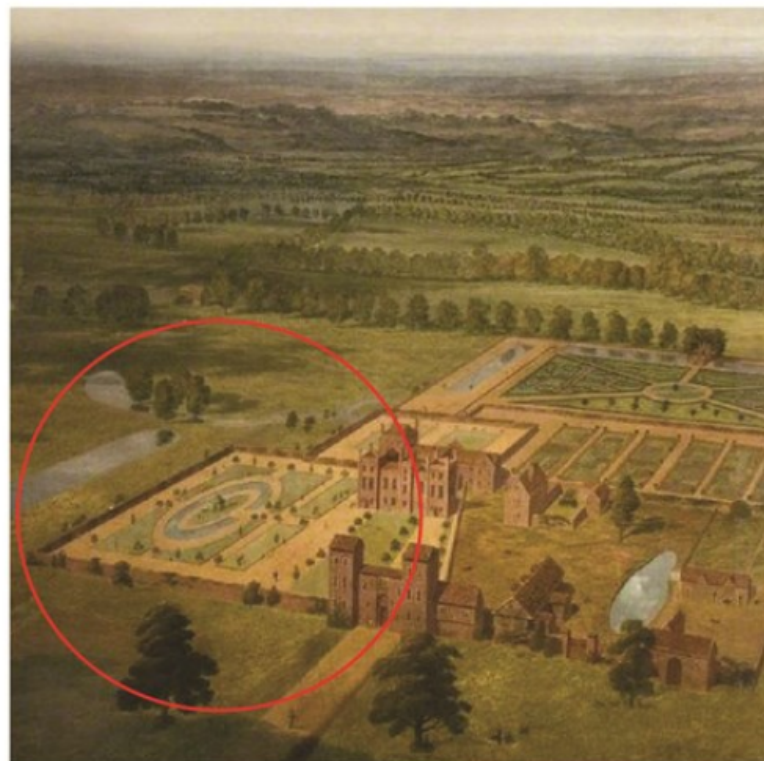
Belhus Park, Aveley/South Ockendon, Essex. Aerofilms capture, 1929 (extract) with annotations







0 60m



Extract of the Ground Penetrating Radar survey (left) showing the survival of historic garden features compared to a painting (right) showing the gardens c1710 © (Left) Historic England (Right) Thurrock Museum

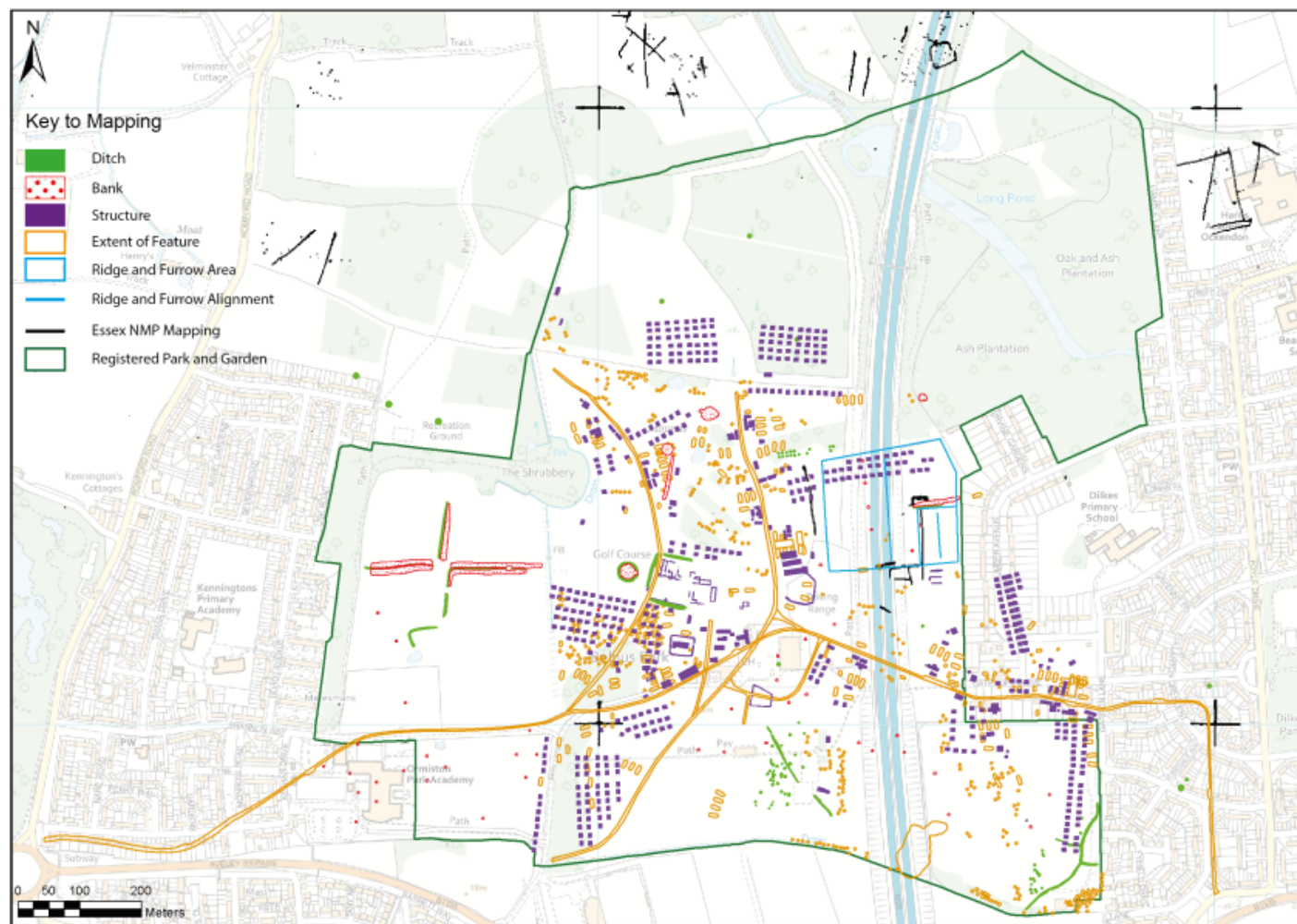


Figure 19: All archaeological mapping from the project area. © Historic England. BaseMap © Crown Copyright 2021. All rights reserved. Ordnance Survey Licence number 100019088.





Historic England

# Belhus Park, Thurrock, Report on Aerial Photograph and Lidar Analysis

Amanda Dickson

Discovery, Innovation and Science in the Historic Environment



Research Report Series no. 19/2022



Historic England

# Belhus Park, Thurrock, Report on Analytical Earthwork, UAV and Geophysical Surveys, April 2021

Matthew Bristow, Neil Linford, Sarah Newsome  
and Andrew Payne

Discovery, Innovation and Science in the Historic Environment



Research Report Series no. 30-2021



## Warley Place, Great Warley, Brentwood, Essex

