



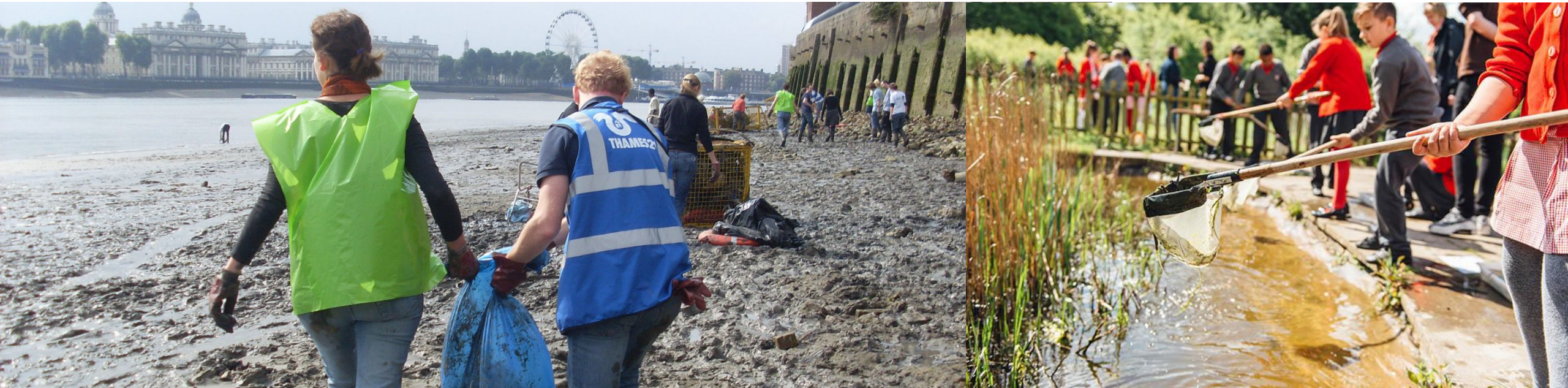
CATCHMENT PARTNERSHIPS AND THE LAND OF THE FANNS

Will Oliver- Thames21 Catchment Partnership Development Officer

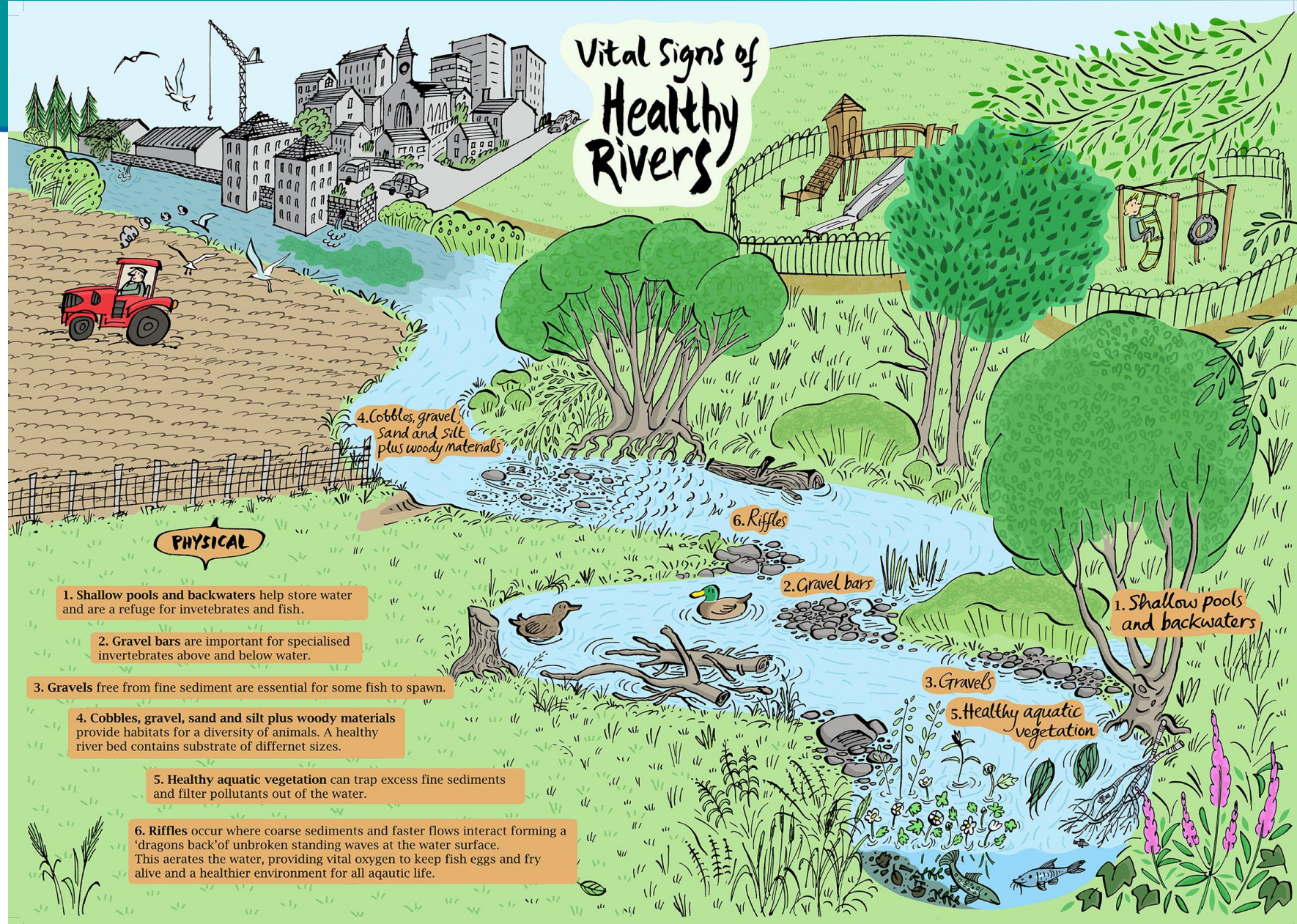
ABOUT THAMES21



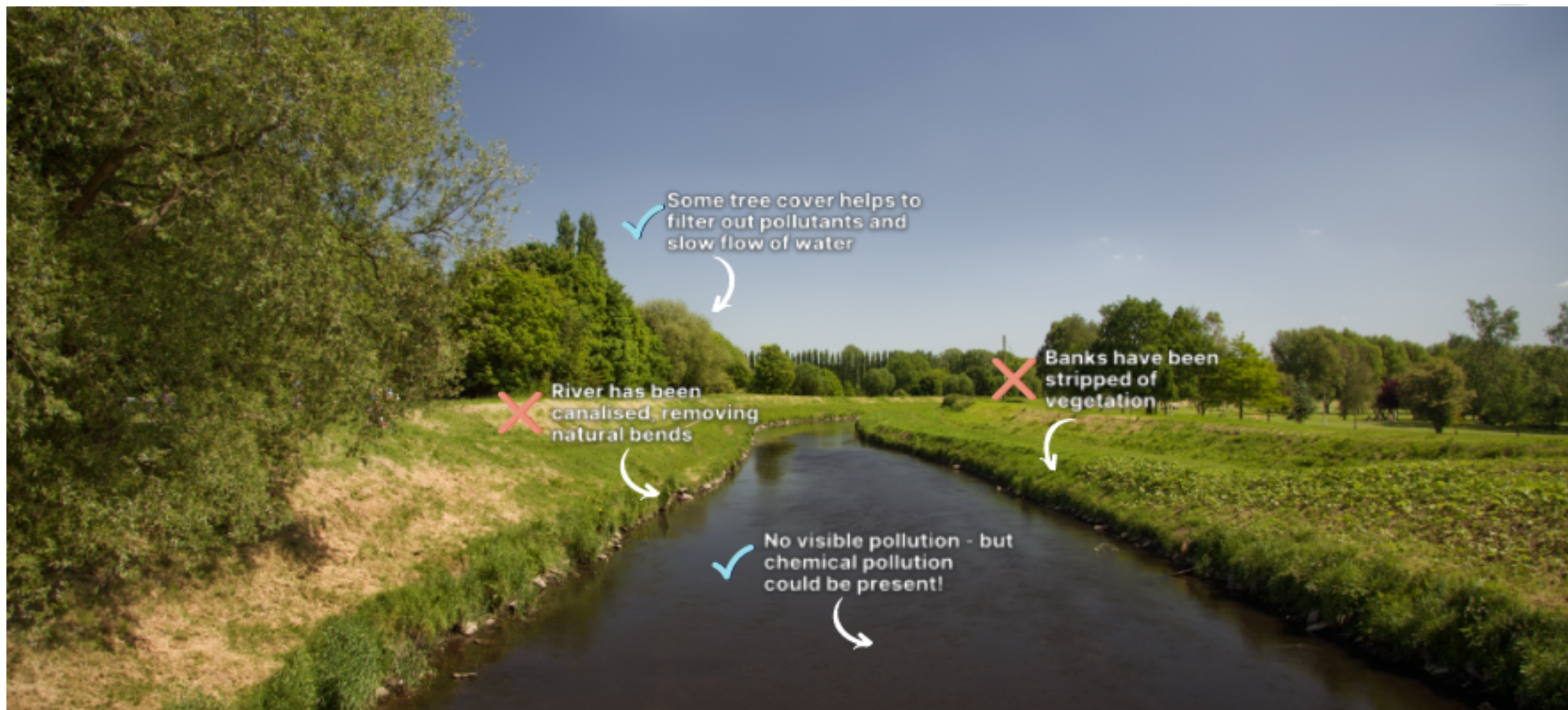
Thames21 is an environmental charity that works to connect people with rivers by putting healthy rivers back at the heart of everyday life. We improve and restore rivers, educate and empower the community and campaign for positive change for the good of people and the environment.



A HEALTHY RIVER



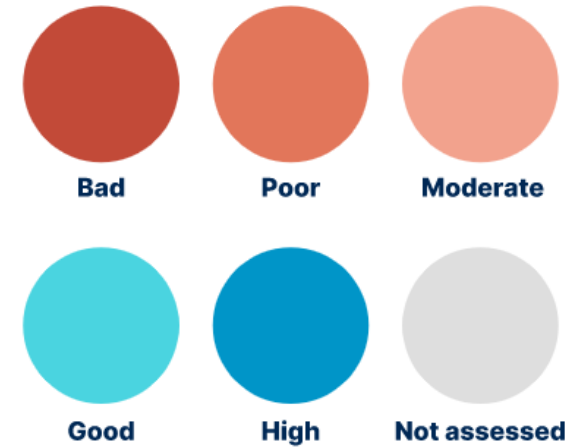
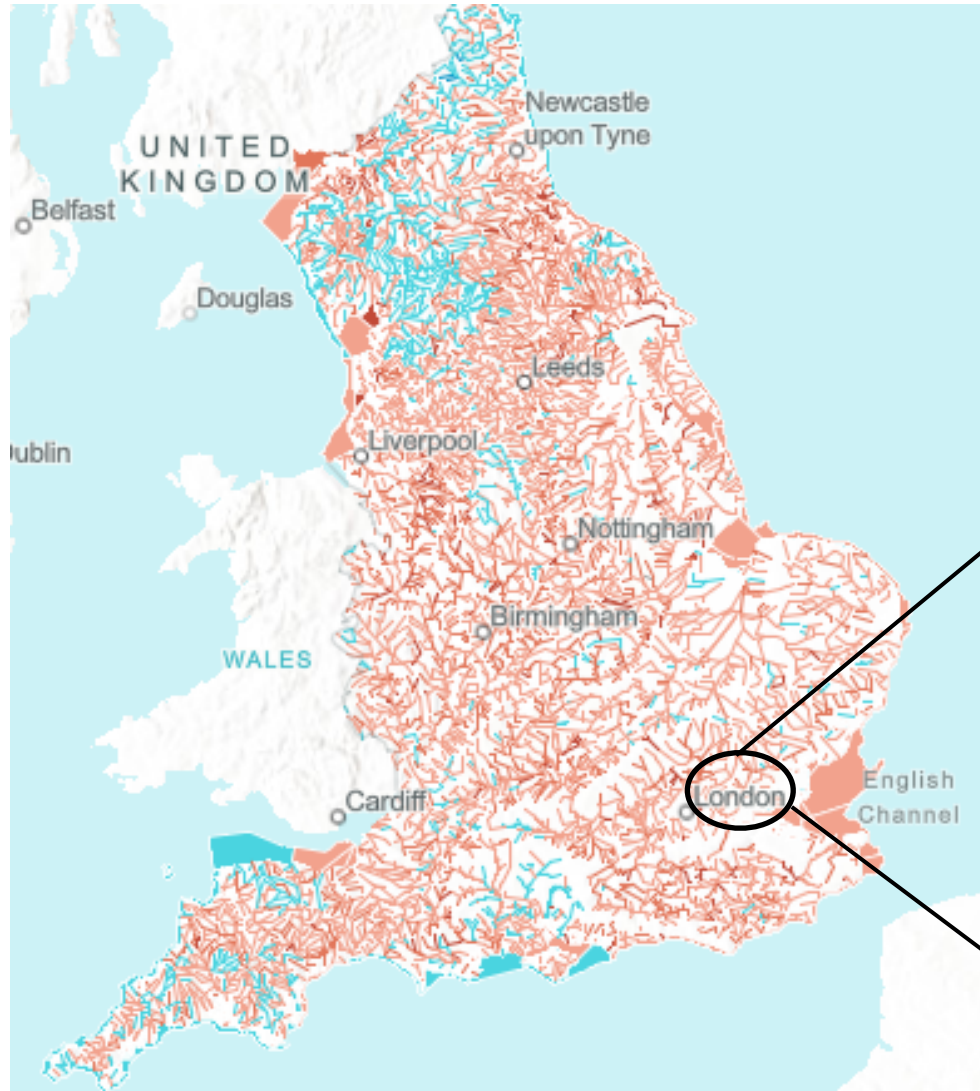
LOOKS CAN BE DECEIVING...



THE STATE OF OUR RIVERS



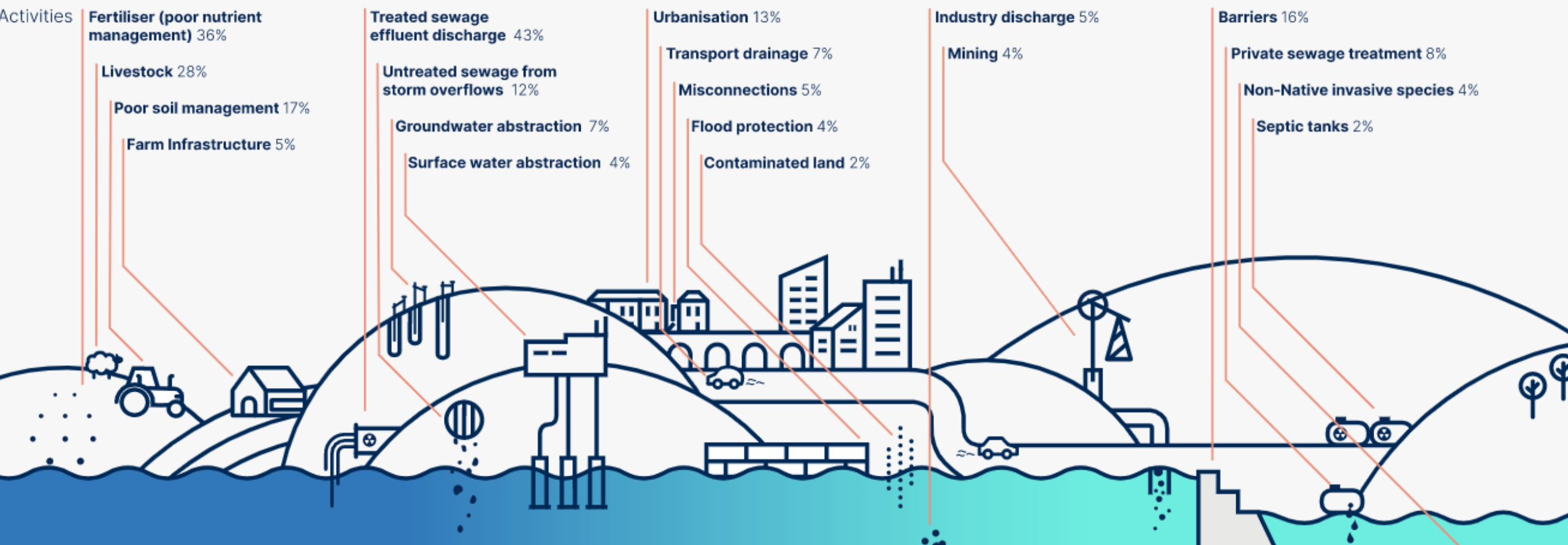
- Only 14% of rivers pass good ecological health
- No rivers pass good chemical health
- No rivers pass good overall health



WHY ARE RIVERS SUFFERING?



Sectors	Agriculture and rural land management Up to 62%	Water industry Up to 53%	Urban and transport Up to 20-30%
---------	--	-----------------------------	-------------------------------------



A CATCHMENT BASED APPROACH



The catchment based approach promotes collaborative working at a catchment scale.



CATCHMENT PARTNERSHIPS



- Catchment partnership groups are involved in each of the 100+ catchment areas of England and Wales.
- Each one brings together local stakeholders to improve their catchments rivers in line with Defra's 25 Year Plan
- Catchment partnership hosts are responsible for:
 - Facilitating knowledge exchange
 - Growing the partnership
 - Developing multi-partner river improvement projects
 - Securing funding for the delivery of these projects



THE BENEFITS OF PARTNERSHIP WORKING



- **Collaboration-** Catchment Partnerships promote collaboration and better link up between partner organisations
- **Funding-** Catchment Based Approach has leveraged, on average, 8x more funding for projects than the initial core investment.
- **Influence & expertise-** Catchment Partnerships contain local experts who can offer free advice and guidance. Catchment Partnerships have the influence to get faster action on issues brought to their attention.
- **Impact-** for the reasons above, projects developed through a catchment partnerships tend to be more impactful

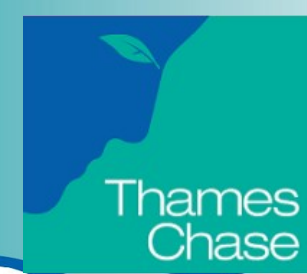


THE CHALLENGES

- **A lack of knowledge** about catchment partnerships (and rivers/wetlands in general!) on an organisational and public level
- **More funding** for catchment partnerships is needed to grow their capacity and increase their impact.
- **The problems facing our rivers and wetlands are highly complex** and require time and investment from multiple groups and individuals to fix.



THE RBI AND SOUTH ESSEX CATCHMENT PARTNERSHIPS



Roding Beam and Ingrebourne Catchment



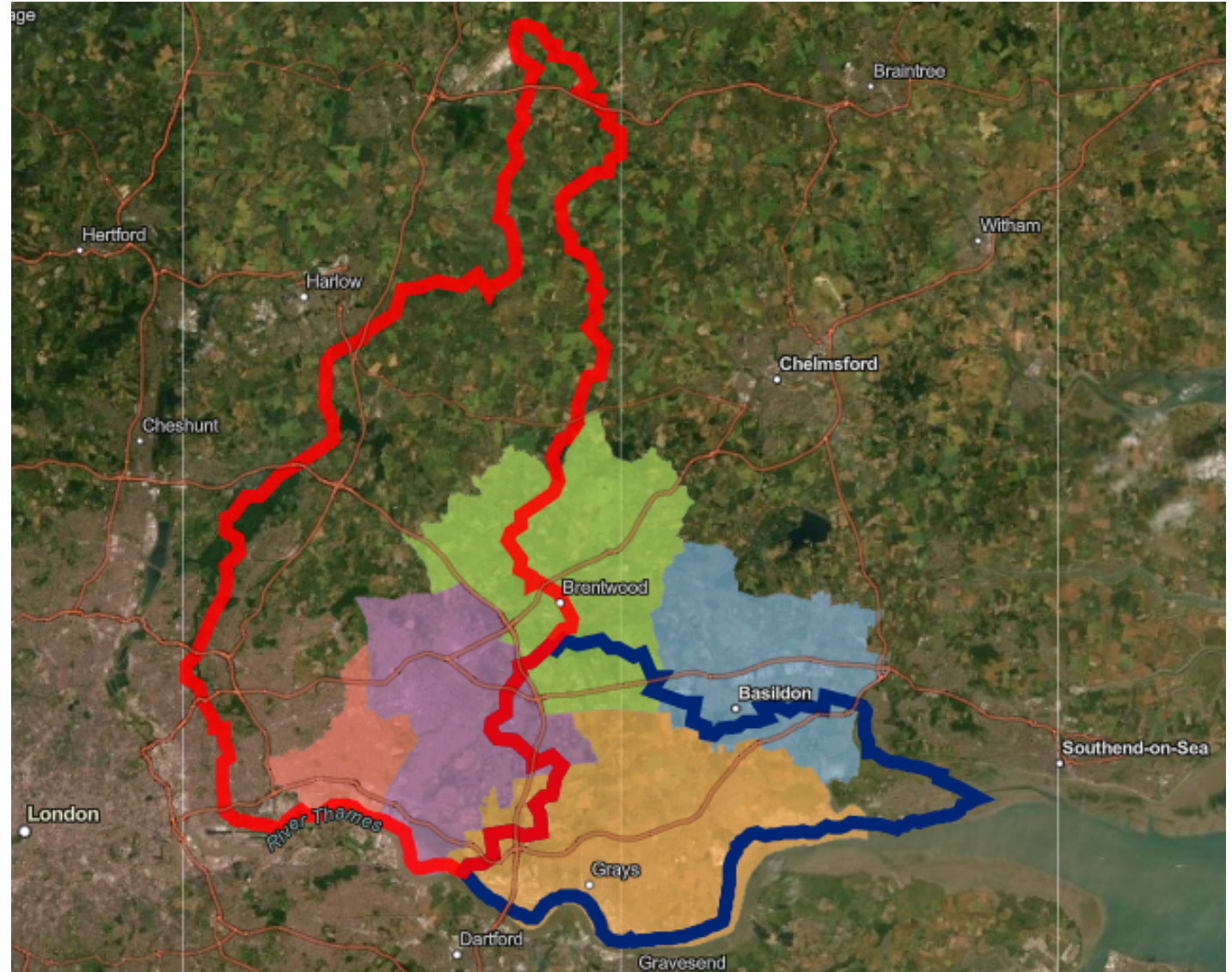
South Essex Catchment



Boroughs within the Land of the Fanns Area

Boundary areas:

- Barking and Dagenham
- Basildon
- Brentwood
- Havering
- Thurrock



CATCHMENT PARTNERSHIPS & THE LAND OF THE FANNS



	The Land of the Fanns	The South Essex and RBI Catchment Partnerships
Restore the wetland landscapes of Essex and East London for the good of people and nature		
Reconnect people with these historic wetland landscapes		
Achieve these goals through the development of collaborative partnerships		

CATCHMENT PARTNERSHIPS & THE LAND OF THE FANNS LEGACY



Rise Park Natural Flood Management and community training
(LotFs, Thames21, EA, Havering Council, Thames Chase Trust)

Pages Wood floodplain improvement and trail creation (LotFs, Thames Chase Trust, Forestry England, Thames21)

River Rom restoration, floodplain reconnection & INNS control
(LotFs, Thames21, Thames Chase Trust, EA, Havering Council, Barking & Dagenham Council)

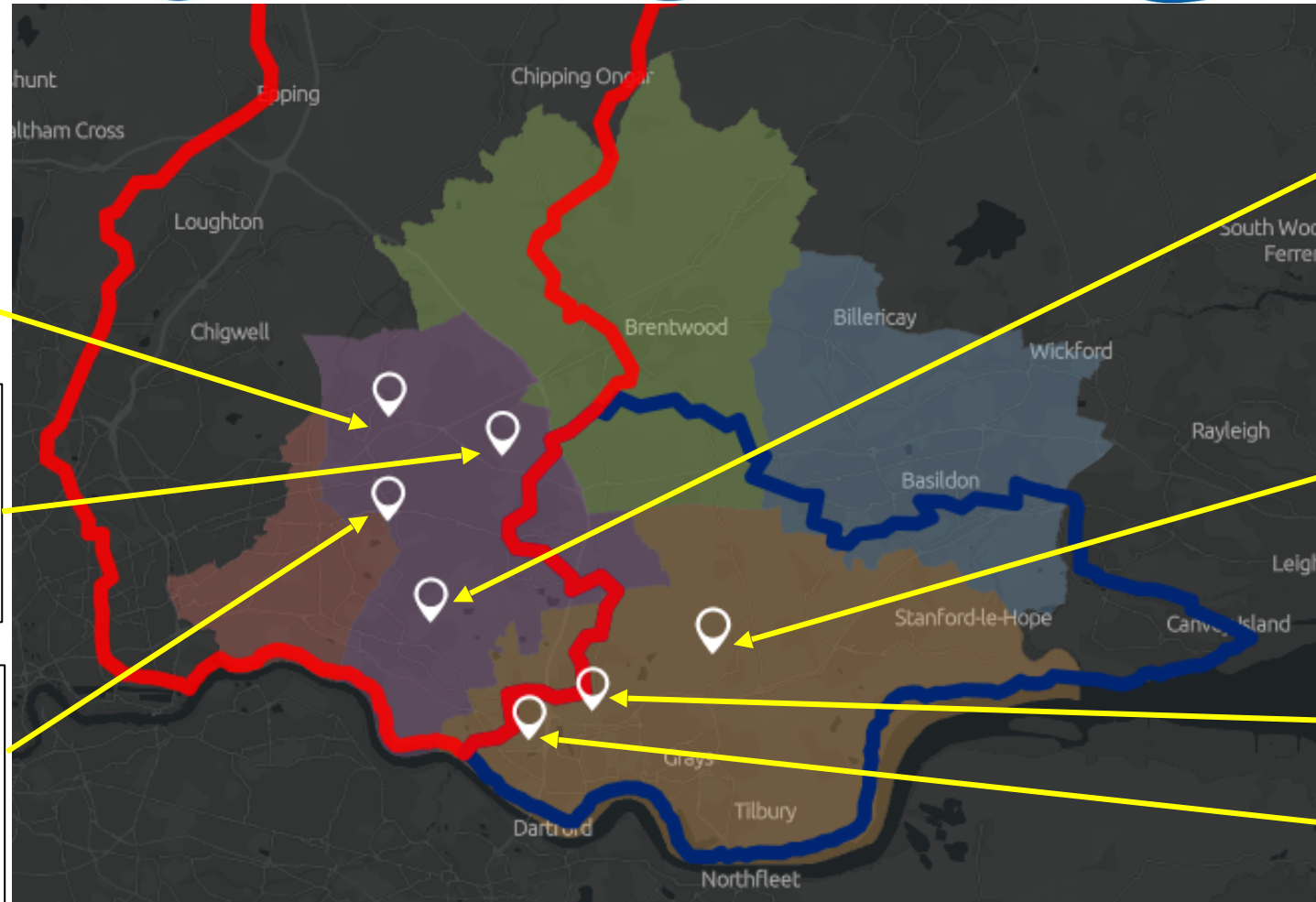
Riverfly and Outfall Safari Citizen Science
(LotFs, Zoological Society of London, Thames Water, Environment Agency)

Ingrebourne Marshes SSSI Reed Cutting
(LotFs, Havering Council, RSPB)

Mardyke floodplain habitat improvement project @ Davy Down
(LotFs, Thames21, Thurrock Council, Essex and Suffolk Water, The Land Trust)

Farmed landscapes
(LotFs, RSPB)

Mardyke floating pennywort removal
(LotFs, Thames21, Essex and Suffolk Water, Anglian Water)



LEGACY IN ACTION!



- The potential for landscape scale improvements to the Rivers Rom and Ingrebourne?
- Potential funding source through the landscape recovery fund.
- Idea developed through partnerships formed and consolidated by the Land of the Fanns



MORE LEGACY IN ACTION!



Parsloes Park

- Located within the Roding, Beam and Ingrebourne Catchment.
- Parsloes Park represents 12% of the publicly accessible open space in Dagenham.
- Situated next to Becontree Housing Estate.
- Originally part of the grounds of Parsloes Manor



THE GORES BROOK



THE GORES BROOK



Roding Beam & Ingrebourne
Catchment Partnership

SUPPORTED BY
MAYOR OF LONDON

LOOKING TO THE FUTURE



Our plans for the Roding, Beam and Ingrebourne and South Essex Catchment Partnerships moving forward:

1. Expand the partnerships with a focus on better engaging the farming communities of both



LOOKING TO THE FUTURE



2. **Secure funding** to increase the capacity of both partnerships

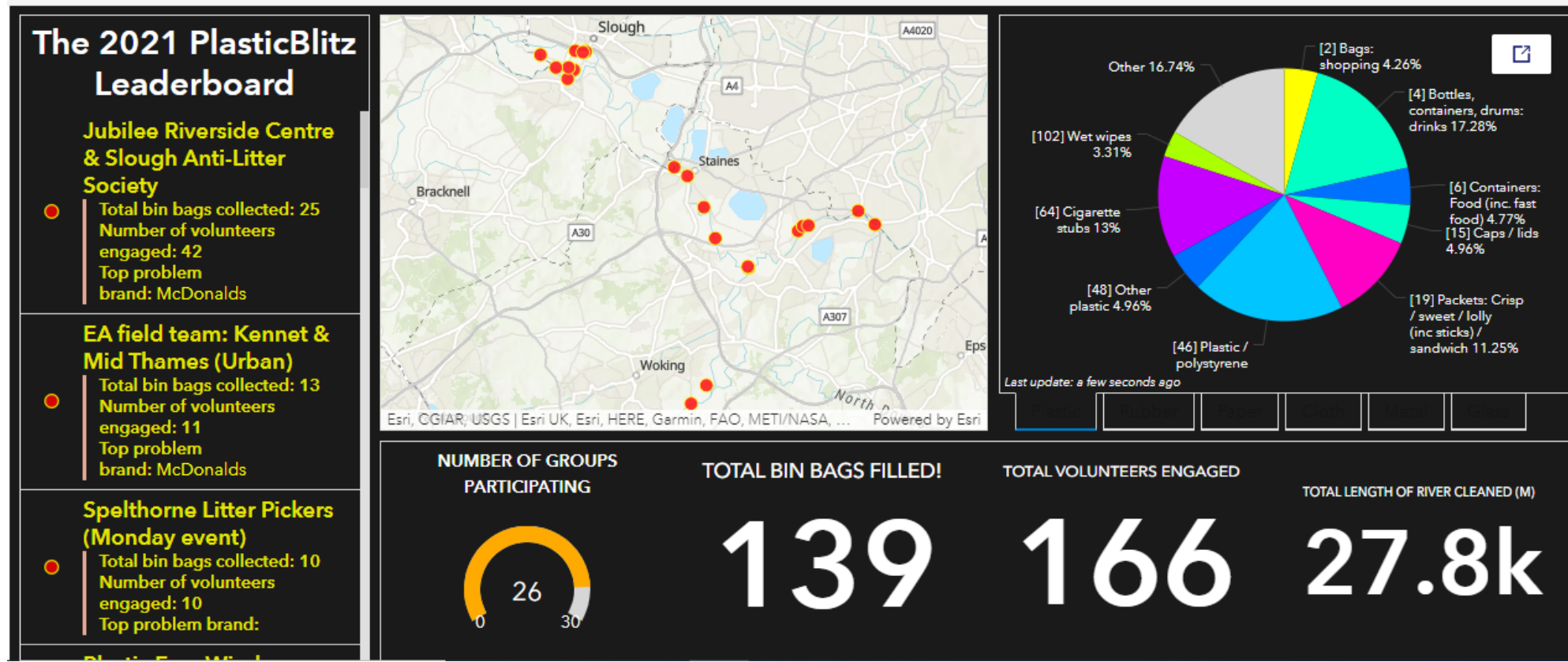


LOOKING TO THE FUTURE



3. Better utilize Citizen Science to engage communities and empower them to protect and campaign for their local rivers (whilst providing us with invaluable data on the health of our rivers!)

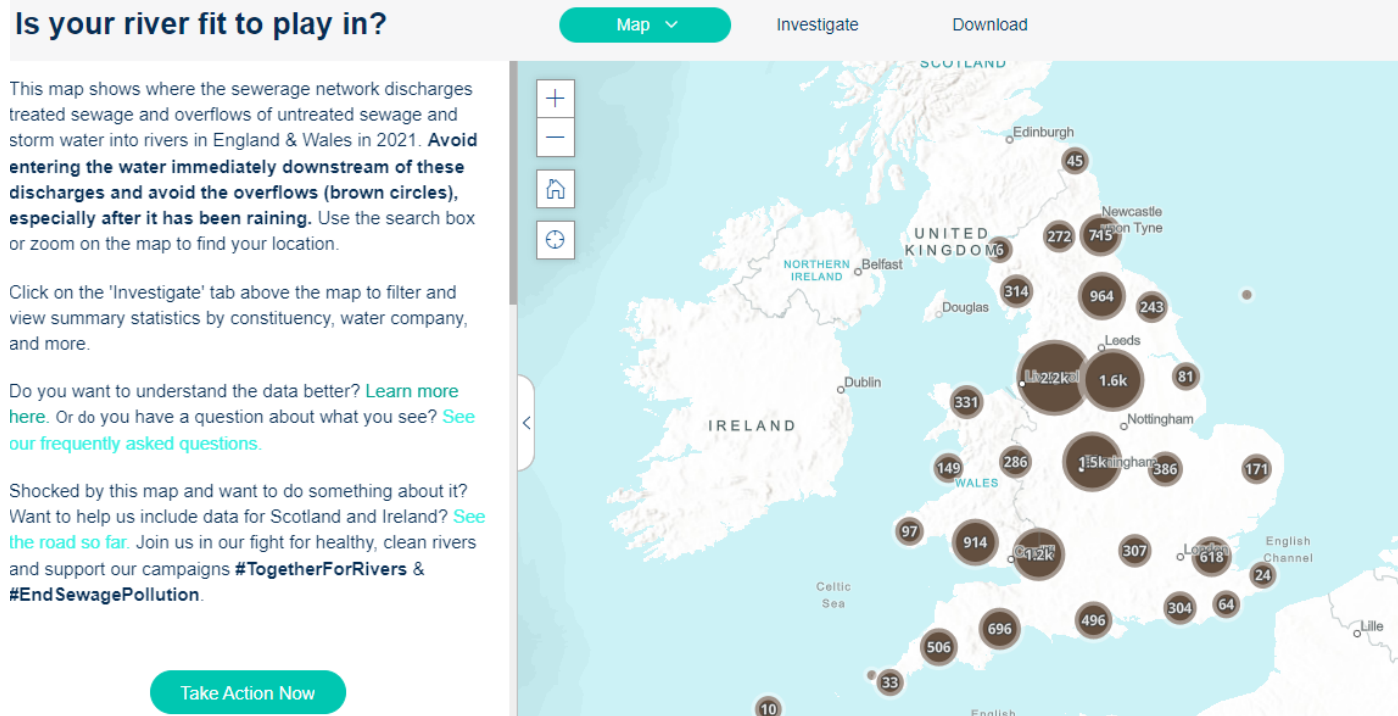
- [Thames and Tributaries Plasticblitz](#)
- [Outfall Safaris](#)
- [Riverfly Monitoring](#)
- [Become a 'River Ranger'](#)



LOOKING TO THE FUTURE



4. Make data relating to the rivers and wetlands of the catchments openly available and easily accessible to educate, inform partners and the public and to encourage a more joined up approach to river improvement projects.



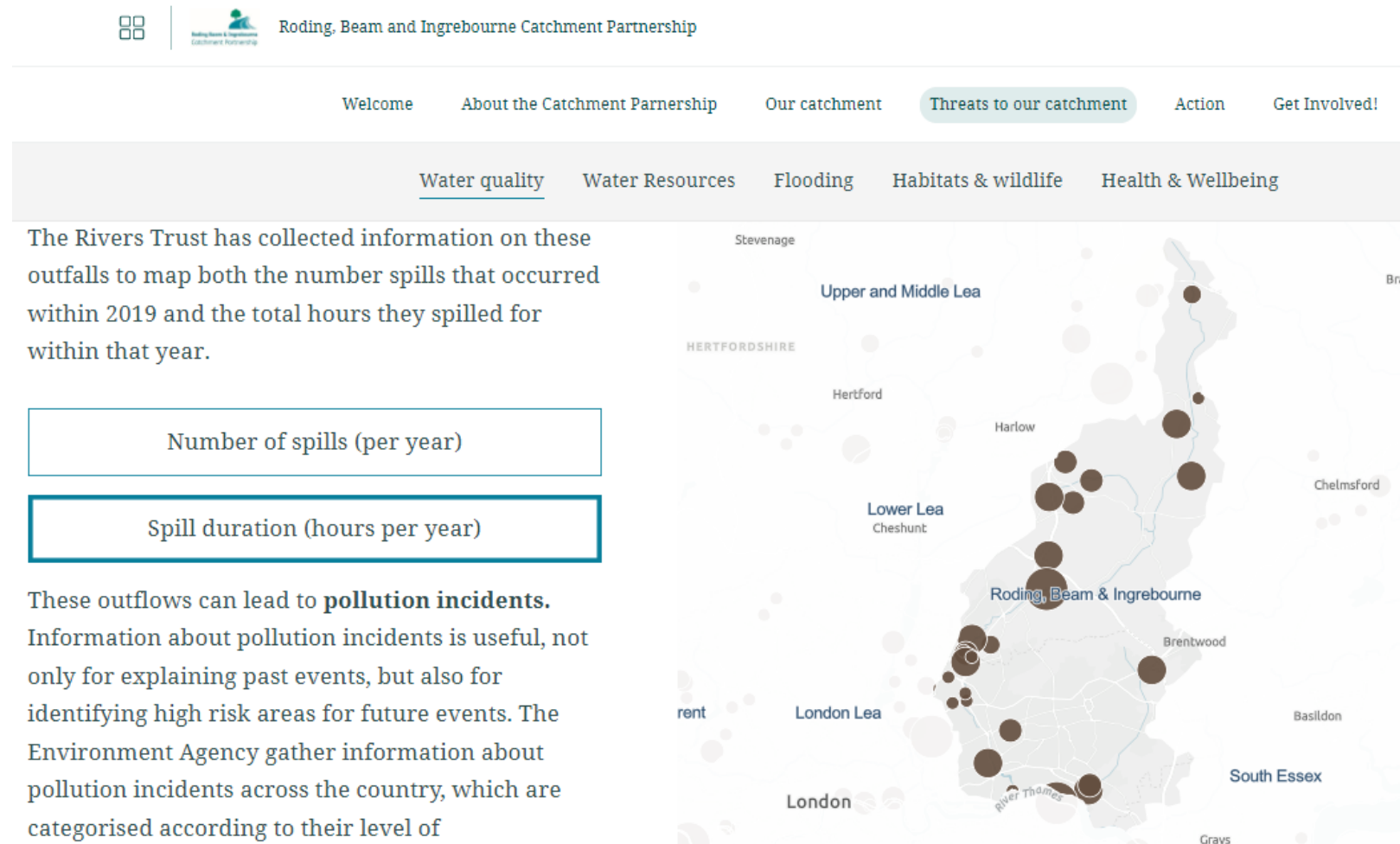
CATCHMENT PLANS



- Developed as ArcGIS StoryMaps
- Interactive!
- Information on the catchments, catchment partnerships and projects the partnerships are involved with.

[South Essex Catchment Plan](#)

[Roding, Beam and Ingrebourne Catchment Plan](#)



THANKS FOR LISTENING!



07826 913307