



Land of the Fanns

Landscape Partnership Scheme Celebration

2017 – 2022

Wednesday 27 April 2022

Langtons House & Gardens

**Celebrating the achievements, highlights
and legacy of the project**

Land of the Fanns Celebration

Introduction

The Land of the Fanns began in earnest with the projects starting in the summer of 2017. However, planning for this complex programme began even further back, over 10 years ago in 2011. And still, if you look at the origins of the partnerships and landscape regeneration projects that have evolved in this area, which Land of the Fanns is just one of, then you would need to look even further back, over 30 years, to the establishment of Thames Chase Community Forest in 1990.

On reflection it's amazing how quickly time has seemed to pass. With so many challenges within partner organisations, including Covid, during this time and still so much having been achieved. It certainly highlights the creativity, resilience and commitment of delivery partners and stakeholders that have made this possible.

Broadly speaking, the original objectives for the Scheme were a combination of aspirations for engaging the local community with the special nature of the Land of the Fanns and recording, restoring and conserving some of the distinct wildlife and heritage assets of the landscape. As the Scheme Manager, understanding the pride and connection of the local community with the heritage of the area has been one of the biggest rewards.

The numbers engaged with the Scheme speak for themselves, from over 4,000 participants in talks, events and activities to 2,718 days of volunteer time. Without the involvement of the many volunteers from the local community, the Scheme would not have been able to deliver on its original ambitions.

Many of the threats and challenges to the protection and restoration of local heritage remain – development pressures, changes in funding for agriculture, rapidly expanding communities, climate change and the nature emergency. It's the capacity within the local community and through partnership work that has increased to enable more to be done. It's this kind of engagement that has been so critical to the success of the programme and has undoubtedly set the seeds for the success of the future legacy.

Benjamin Sanderson

Scheme Manager | Land of the Fanns





Working in partnership
to deliver the legacy of
Land of the Fanns

Land of the Fanns

Landscape Partnership Scheme 2017 - 2022



Project Staff Members



Year Project



650,000

Local Audience

£1,360,000

National Lottery Heritage Fund

185km²

Project Area



Days Of
Volunteer Time

200+

Stakeholders

211

Talks, Events &
Activities Organised

4,191

Participants In Talks,
Events & Activities

544

Volunteer
Activities

£1million

Additional Match
Funding Raised



80+

Delivery Partners

20 Community Action Fund
Projects Received Funding Of

£75,000

For more information visit - www.landofthefanns.org



@LandOfTheFanns



@landofthefanns



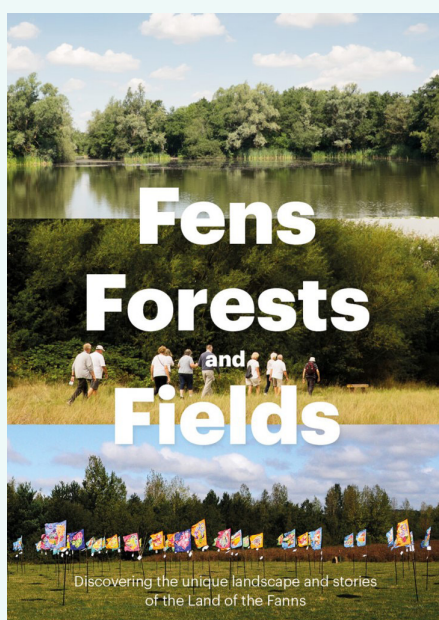
@LandoftheFanns



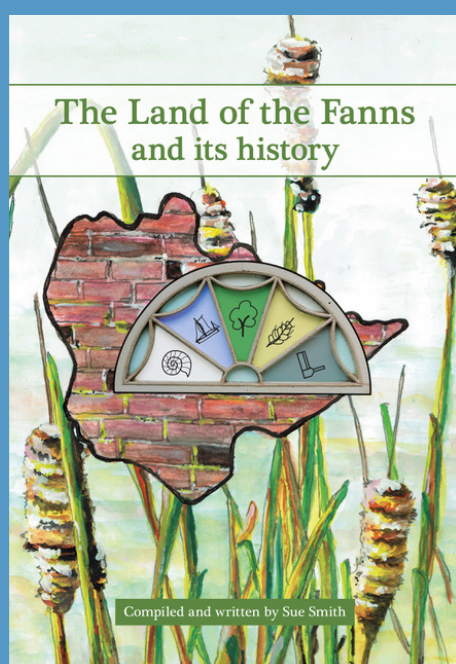
Land of the Fanns in print

The Land of the Fanns has produced two books over the course of the project: *Fens, Forests and Fields* and *The Land of the Fanns and its History*.

With contributions from social historian Ken Worpole, photographer Tamara Stoll and artist Ali Pretty, *Fens, Forests and Fields* celebrates the intriguing place that is the Land of the Fanns: a complex landscape, dissected by roads, rail and industry, and straddling the London and Essex border. The book collects together personal stories from the people who live and work in the 70 square mile area of the Land of the Fanns and is a fitting legacy of the people, places and commitment to the area. It captures the spirit of the place at a pivotal moment as the climate emergency and the aftermath of the pandemic force reflections on the past and a need to write a different future.



To order your copy please visit: www.justgiving.com/fundraising/land-of-the-fanns



The new local history book *The Land of the Fanns and its History* draws together the interesting, surprising, sometimes shocking or amusing tales of the local area for the pleasure and education of all.

Guided by the national curriculum, this book suggests 'Bright ideas' and projects for children, their parents and teachers together with 'Places to visit near and far'. For those wanting to take their studies further it gives ideas for 'Further projects'; 'References for further research' and 'Further reading lists' with pages for notes. For the first time, from Dagenham to Langdon Hills, from Havering Ridge to Thameside, the natural heritage, pre-history and history stories told here enable those from 9 upwards to be able to better enjoy, value and respect this hard-pressed landscape for the future.

To order your copy please visit: www.justgiving.com/fundraising/thelandofthefannsanditshistory

Learning in the Land of the Fanns

The Land of the Fanns hosts many different landscapes for young learners to explore and connect with, from woodlands to meadows, to lost eighteenth century marvels to rivers: All offering great opportunities for students across primary and secondary settings. The Land of the Fanns online resource was created to help educators get the most out of these opportunities.

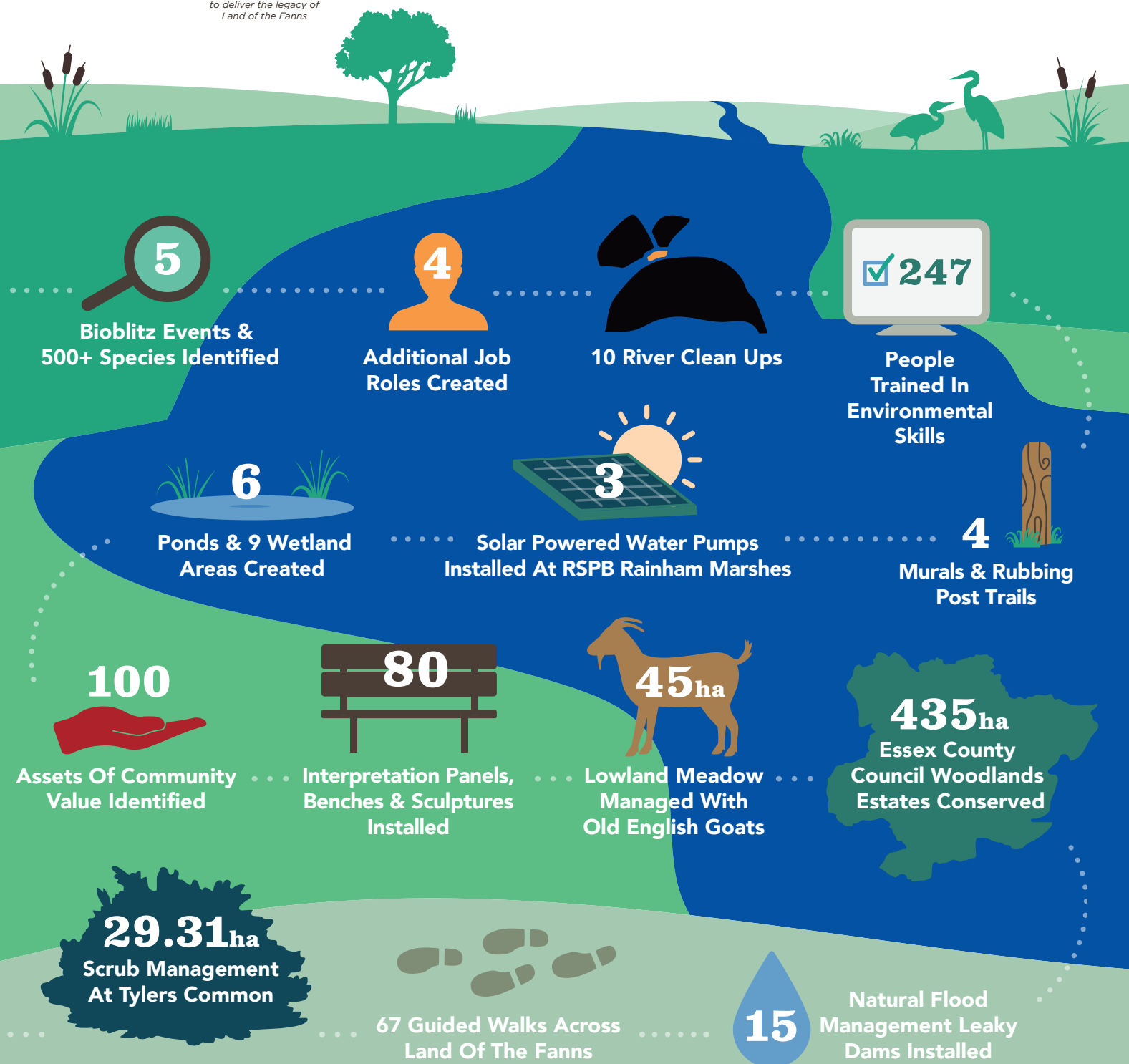
Intended for anyone involved in education in the Land of the Fanns area: parent, teacher, home learner: the resource makes it easy to find local sites offering educational activities together with supporting materials. It covers each key stage, marks curriculum links and pulls together resources from different providers in one place.

Find the online resource here:
www.landofthefannslearning.org



Land of the Fanns

Landscape Partnership Scheme 2017 - 2022



For more information visit - www.landofthefanns.org

Explore the Land of the Fanns on foot

The Land of the Fanns assisted in the production of a new collection of walking leaflets, including the updated Thames Chase Forest Circle walk. These include a sketch map, step-by-step walking guides and notes on the history and wildlife of the walking area. The guides are available to pick up from the Thames Chase Forest Centre in Upminster.

Find out more here: www.thameschase.org.uk/discover/walking



Discover Metropolitan Essex: prepare to be surprised

Metropolitan Essex has fascinating sites across the area, ideal for a day out. Intriguing heritage, inspiring architecture and things to do for all the family.

Land of the Fanns has been pleased to support the DiscoverME network. DiscoverME celebrates the heritage and tells the tales of the area's past so those living and working in Metropolitan Essex can share in its fascinating story, be proud of its history, and access and enjoy its treasures. You'll be surprised at the places you can find in your own local area, and the discoveries you can make when you know where to look.



Find out more here: www.discoverme.london/

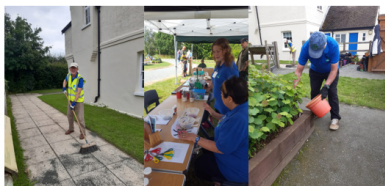
Volunteer database

Access our online database to find volunteer opportunities in heritage and environmental projects across the area. www.landofthefanns.org/join-in/



LAND OF THE FANNS VOLUNTEER DATABASE

This database is separated into volunteering opportunities in the different boroughs within the Land of the Fanns and then separated into either heritage or environmental organisations who welcome volunteers.



Land of the Fanns

Landscape Partnership Scheme 2017 - 2022

1

Online Educational
Resource Created

52

Heritage Themed
Training Courses

14

People Trained In
Oral History Recording

17

Unforgettable Gardens
Identified & Recorded

23

School Travel
Fund Grants

11

People Attended
Traditional Woodland
Management Skills Training

1

Jacobean Garden
Discovered

50

Fabulous Historic
Features Documented In
Land Of The Fanns

13

Interpretation
Projects

859

Attended Travelling
Archaeology Events

2

Books Published

4

'Discover Metropolitan
Essex' Tours

27

Local Groups
Worked With

18

Young People
Took Part In An
Archaeological Dig

For more information visit - www.landofthefanns.org



@LandOfTheFanns



@landofthefanns



@LandoftheFanns



50 Fabulous Features & Unforgettable Gardens

The 50 Fabulous Features report detailing 50 historically significant features in the landscape across the Land of the Fanns was compiled by volunteers from the Essex Gardens Trust and Land of the Fanns. They researched and recorded features in order to get a better understanding of the importance and significance of some of the area's forgotten or unrecognised heritage. Encompassing everything from Tudor 'canals', icehouses, memorial gardens, spas and post-war playground-design, the project highlighted the area's riches and will help to protect them from future neglect and development. Unforgettable Gardens, an Essex Gardens Trust project, focused on the garden heritage of Thurrock

and produced an inventory offering a detailed understanding of its garden past. Included in the research are cemeteries, public parks, allotments and amenity gardens with significant heritage value, as well as substantial and historically valuable private gardens. All these reflect the development of the Thurrock area.

As with the 50 Fabulous Features report, the Inventory will be kept by the District Council Conservation & Planning department and other relevant local authorities to support their work in protecting important sites. The Inventory will also be freely available to the public via the Essex Records Office as well as on the Essex Gardens Trust website.

Guidance for Communities on How to Protect Green Space and Heritage Sites

The Land of the Fanns project has helped communities to identify and record locally valued heritage and green spaces. This Guidance is the next step, which is to support communities to take action to protect the cherished spaces identified as important. The community asset toolkit can be downloaded from:

www.landofthefanns.org/our-partnership/partner-resources/

The Legacy

We should all recognise that Land of the Fanns has been a huge success and will positively change the way we work together across our landscape. I am sure all partners and stakeholders will agree that we need to grasp this opportunity and work closely to sustain the energy and momentum gained by the team in the past five years. The good news is that, through the Thames Chase Trust and its agreed role as the Legacy Body, we have a tried and tested mechanism in place to achieve this.

The Trust will build on its 32 years' experience of working in partnership across the Community Forest landscape to continue the

good work of the Land of the Fanns team. It is a bright and exciting future ahead for our landscape now with more partners engaged, more people connected to their landscape and a greater understanding and appreciation of culture and heritage.

A new Community Forest Partnership Board has been created to drive forward the legacy of Land of the Fanns and to oversee the creation of a refreshed Thames Chase Plan, forging an ambitious strategic vision and taking us into the next ten years of robust partnership working across our landscape.

Dave Bigden

Director | Thames Chase Community Forest





Thank you!

We'd like to thank all the partners, volunteers and stakeholders who have been involved in the Scheme over the past 5 years. Thank you also to Thames Chase Trust, as the lead partner, for hosting the Land of the Fanns Project Team and to the London Borough of Havering for their continued support for the Project and helping to make it a success.

Thank you to all our funders, including the National Lottery Heritage Fund, for their generous support for the Land of the Fanns.

Finally thank you to the individual sites, speakers and panellists for giving their time to be part of the celebration event.

We hope you enjoy the day and we can all look forward to a successful legacy!



Many of the photographs used in this programme have been taken over the course of the Project and we would like to thank all contributors.